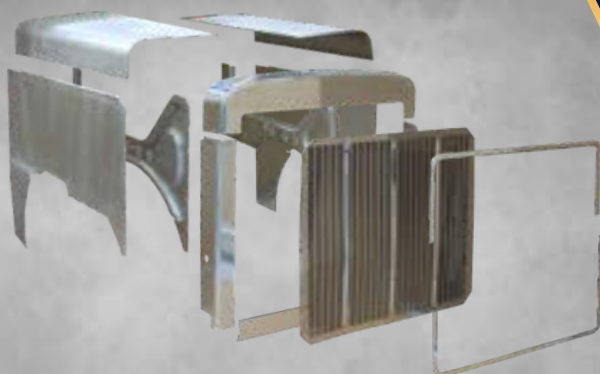


# PARTS CATALOG

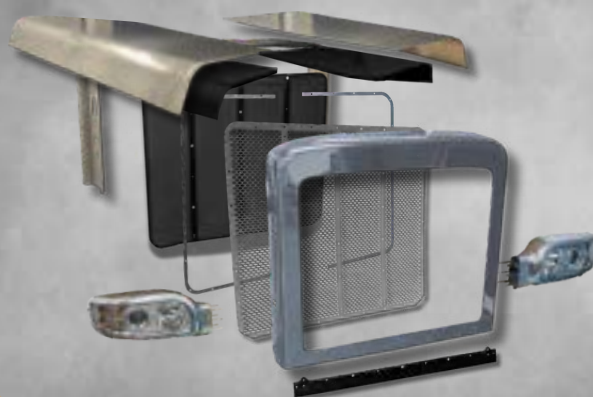


**Truck  
Shrouds, LLC**

# 2026



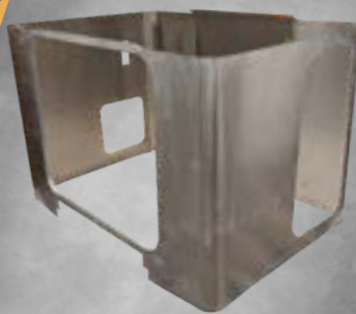
**379 Hood Parts**



**389 Hood Parts**

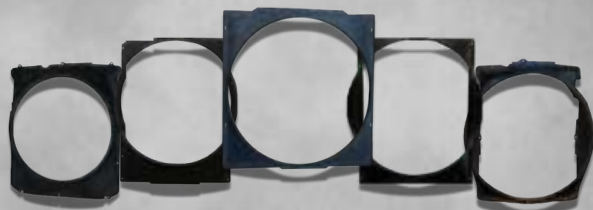


**Peterbilt Cab Skins**



**Peterbilt Sleeper Skins**

**BIG  
HOLE  
CONVERSION**



**Peterbilt & Kenworth Fan Shrouds**

**LITTLEBIGHOOD**

# TABLE OF CONTENTS

## FAN SHROUDS

3-6

NEW PARTS ADDED

## HOOD COMPONENTS FOR PETERBILT 379

7-16



Extended (127") Hood Panels	7
Extended (127") Hood Grille & Headlights	8
Short (119") Hood Panels	9
Short (119") Hood Grille & Headlights	10
Fenders & Components	11
Bridge Brackets	12
Roller Brackets & Assemblies	13
Roller Assembly Components	14
Pivot Assemblies	15
Cables, Studs, & Springs	16

## LITTLEBIGHOOD CONVERSION

17-18

## CUSTOM 379 FENDERS

19

## BIG HOLE CONVERSION

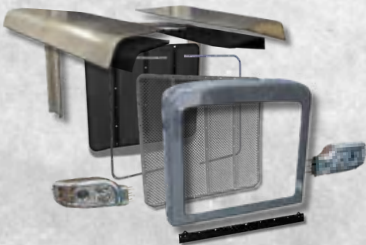
20



NEW PARTS ADDED

## HOOD COMPONENTS FOR PETERBILT 388 & 389

21-24



Hood Panels, Bridge, & Insulation	21
Hood Grille, & Headlights	22
Fender Components	23
Guides, Cables, Springs, and Studs	24
Hinge and Pivot Components	25

## HOOD COMPONENTS FOR PETERBILT 378 / 357

27-28

Hood Grille & Headlights	27
Hood Components	28

# TABLE OF CONTENTS

## CAB COMPONENTS FOR PETERBILT

29-32



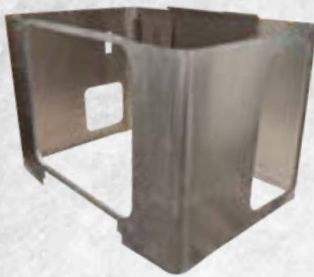
Cab Side Skins	29
Cab Door Skins & Handles	30
Cab Corner Skins, Roof Cap, and Cowl	31
Day Cab Window & Components	32

## UNIBILT SLEEPER IDENTIFICATION GUIDE

33-34

## UNIBILT GENERATION I

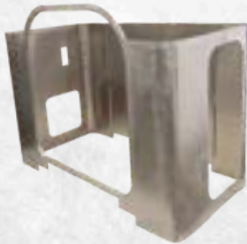
35-41



36" Flat Top	35
48" Flat Top	36
48" High Roof	37
48" Ultra	38
63" Flat Top	39
63" High Roof	40
63" Ultra	41

## UNIBILT GENERATION II

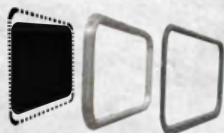
42-46



36" Flat Top	42
48" Flat Top	43
48" Ultra	44
63" Flat Top	45
63" Ultra	46

## COMPONENTS FOR UNIBILT SLEEPERS

47-48



Big Hole Conversion	47
Baggage Door Handles	47
Sleeper Window Components	48

## HUCK GUN & NOSES

49-50

## HOOD PANELS FOR PETERBILT 359

51

## BATTERY BOX COVERS

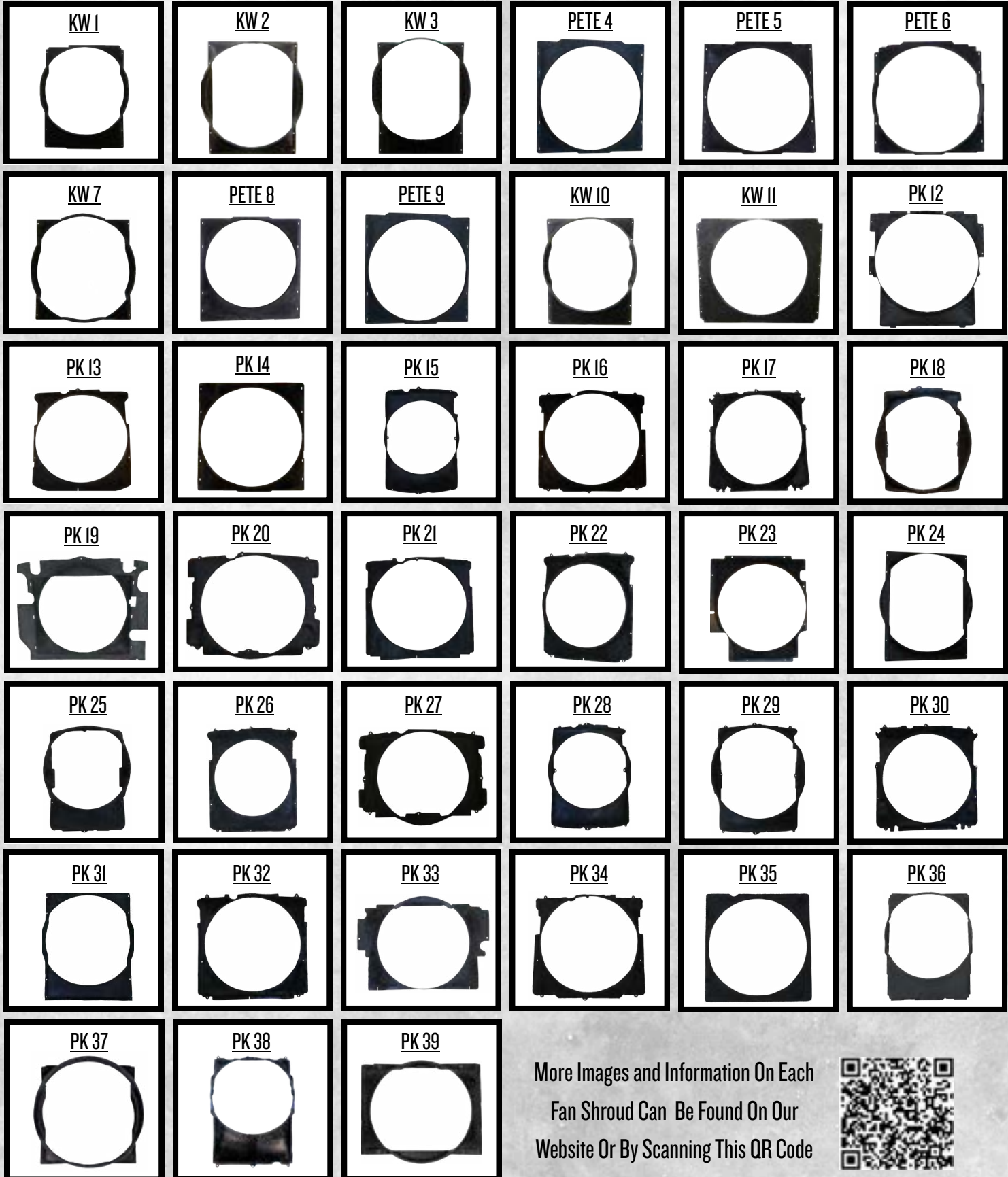
51

## COMPONENTS FOR KENWORTH MODELS

52

W900 Insulation	52
Aerocab Sleeper Corners	52

# FAN SHROUDS FOR PETERBILT & KENWORTH



# FAN SHROUDS FOR PETERBILT & KENWORTH

Truck Shrouds, LLC manufactures high-quality, gel-coated, aftermarket fan shrouds for Peterbilt and Kenworth trucks.

## FAN SHROUD CROSS REFERENCE

"07" PREFIX		"K216" PREFIX		"F22" PREFIX		"N" PREFIX		OTHER	
OEM PART	TS PART	OEM PART	TS PART	OEM PART	TS PART	OEM PART	TS PART	OEM PART	TS PART
07-05202	PETE 5	K216-1787-1	PK 36	F22-1022-01	KW 1	N4169001	PK 27	I460214-AZ	PK 22
07-06769	PK 39	K216-1964	KW 7	F22-1026-02	PK 31	N4170003	PK 17	I460218-AZ	PK 26
07-06675M001	PETE 5	K216-1968	KW 10	F22-1037	KW 1	N4171003	PK 30	4870645006	PK 19
07-06675M002	PETE 4	K216-1975	KW 2	F22-1039-195	PK 37	N4172001	PK 22	4870645007	PK 19
07-06680M001	PETE 5	K216-1982	KW 11	F22-6011M10	PK 35	N4173001	PK 26	3A-48426D	PK 23
07-06680M002	PETE 4	K216-1984	PK 31	F22-6012M10	PK 14	N4175001	PK 29	3A-48427D	PK 23
07-06681M001	PETE 5	K216-2007	KW 1	F22-6014M03	PETE 6	N4176001	PK 13	5S68234D	PK 33
07-06682M002	PETE 5	K216-2041	KW 2	F22-6031M01	PETE 6	N4178001	PK 25	5S68905D2	PK 12
07-06684M001	PETE 8	K216-2043	KW 3	F22-6039	PK 14	N4189001	PK 32	W0274001	PK 20
07-06684M002	PETE 8					N4191001	PK 21	W0276001	PK 15
07-06684M003	PETE 8					N9268001	PK 18	Y1593001	PK 16
07-06686M002	PETE 9					NM907001	PK 38	Z8985001	PK 34
07-06688M002	PETE 4							Z8986001	PK 34

Don't see what you are looking for? Additional crosses and solutions available!  
Please call for details.

## FAN SHROUDS AVAILABLE FOR

### PETERBILT

- 330 • 367 • 385 • 587
- 335 • 375 • 386 • 589
- 337 • 377 • 388
- 348 • 378 • 389
- 357 • 379 • 567
- 365 • 384 • 579

### OPTIONS FOR MOST PETERBILT & KENWORTH MODELS

### KENWORTH

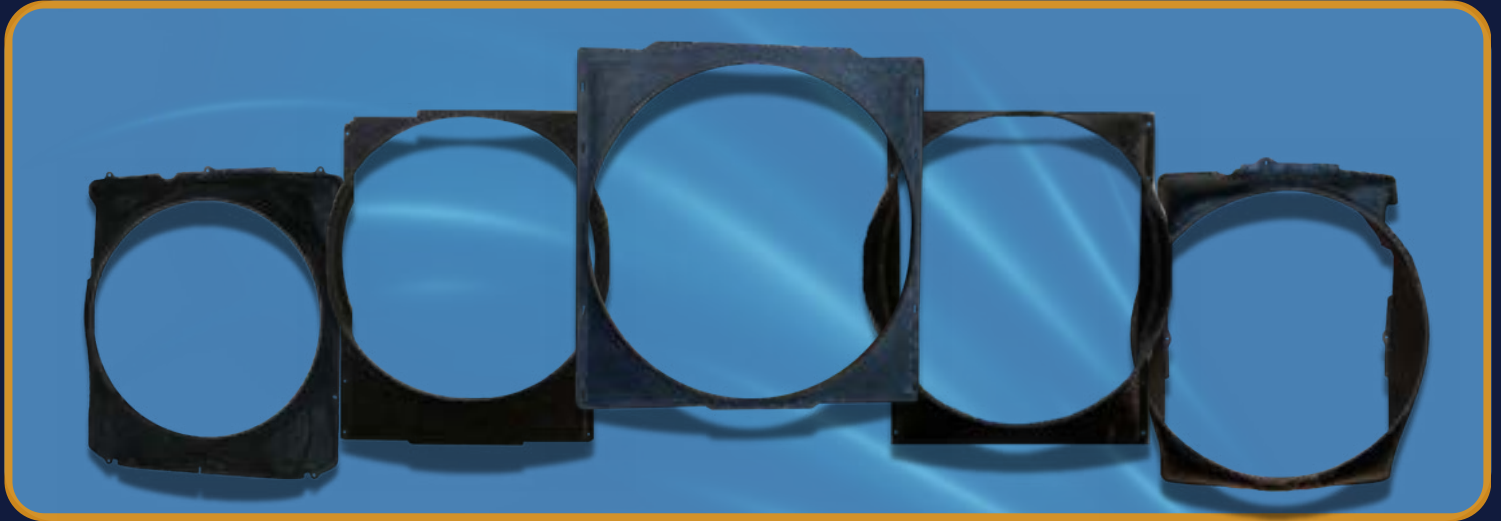
- T600 • T700 • T2000
- T660 • T800 • W900
- T680 • T880

# All Fan Shrouds are Proudly Manufactured in the USA



# THE FAN SHROUD EXPERTS

FOR PETERBILT & KENWORTH TRUCKS



**DIRECT FROM MANUFACTURER**



**3 YEAR WARRANTY**



**OVER 25 YEARS EXPERIENCE**



**IN STOCK INVENTORY**



**KNOWLEDGEABLE STAFF**



**FAST SHIPPING**



**GREAT CUSTOMER SERVICE**



**QUALITY FIBERGLASS**

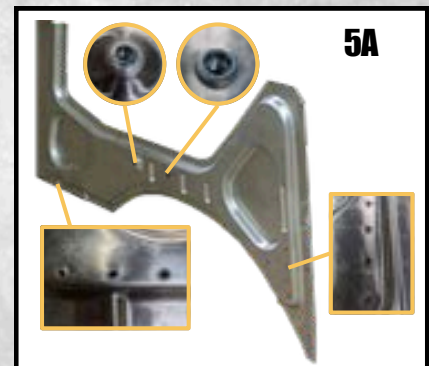


**GUARANTEED FIT**



**BIG SAVINGS VS OEM**

# PETERBILT 379 EXTENDED (127") HOOD PANELS

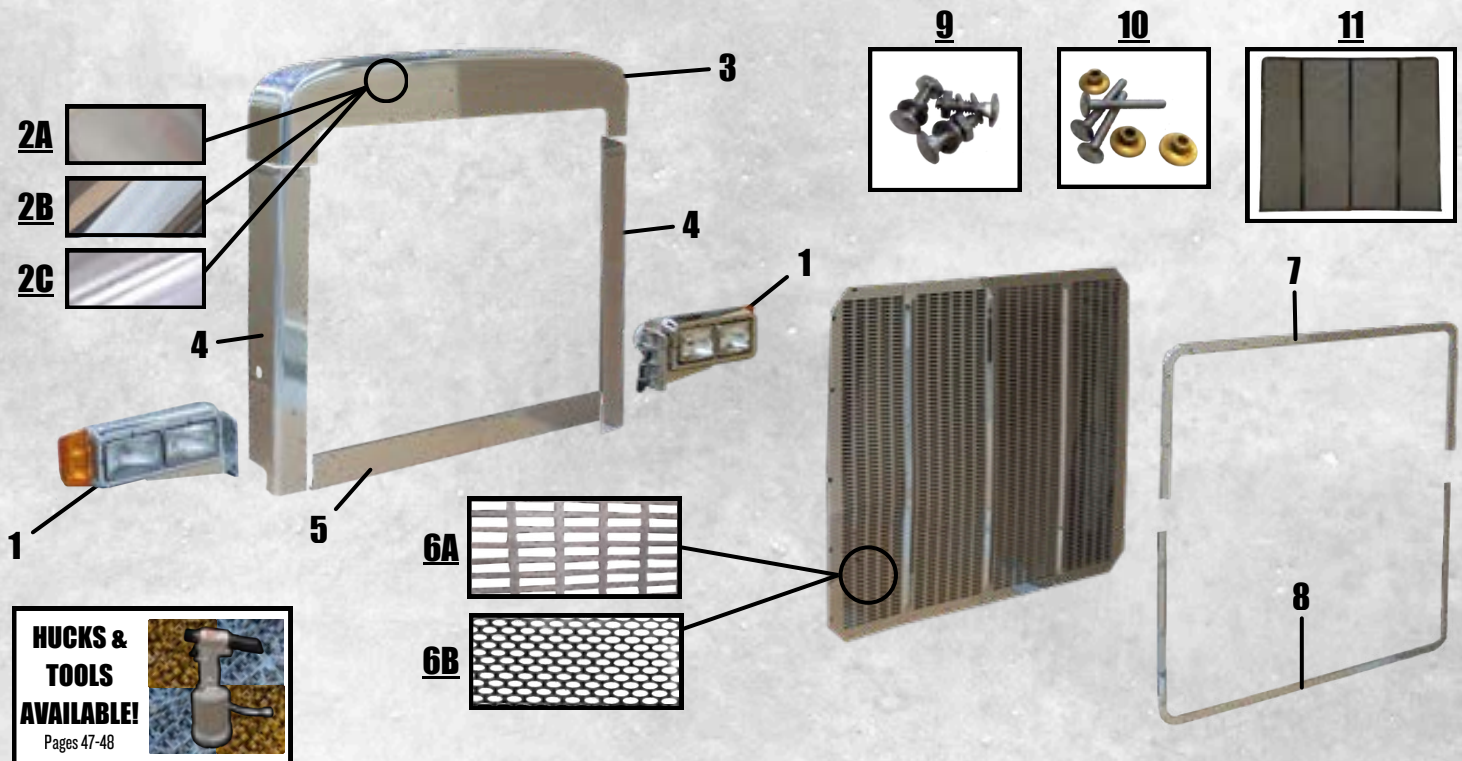


**HUCKS & TOOLS AVAILABLE!**  
Pages 47-48

	TS PART NO.	OEM PART NO.	DESCRIPTION
1	4333L/R	I3-04333L/R	Top Skin, Left or Right
2	4400	I3-04400	Center Hood Strip (OEM)
3	3585L/R	I3-03585L/R	Side Skin, Left or Right
4	4866L/R	I3-04866L/R	Hood Insulation, Left or Right
5	3577L/R	I3-03577L/R	Inner Side Panel, Left or Right (OEM)
5A	3577L/R-I	I3-03577L/R	Inner Side Panel, Left or Right with Rivnuts Installed
6	4402L/R	I3-04402L/R	Lower Inner Skirt, Left or Right (OEM)
7	3857	23-13857	Hood Latch Kit (Pair)
8	4393	I3-04393	Hood Latch Catch Bracket (Single)

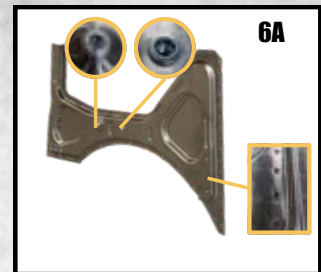
# PETERBILT 379

## EXTENDED (127") HOOD GRILLE & HEADLIGHTS



	TS PART NO.	OEM PART NO.	DESCRIPTION
1	7572L/R	16-07572L/R-P	Headlight Assembly, Left or Right (OEM)
2A	7260	N/A	Complete Extended Hood <u>ALUMINUM</u> Grille Surround (OEM, 2.5mm Thickness)
2B	7250	N/A	Complete Extended Hood <u>STAINLESS STEEL</u> Grille Surround (1.0mm Thickness)
2C	7265	N/A	Complete Extended Hood <u>CHROME PLATED</u> Grille Surround (1.1mm Thickness)
3	3515	13-03515P	Extended Hood Aluminum Grille Crown (OEM)
4	3964L/R	13-03964M001L/R	Extended Hood Aluminum Side Grille Piece, Left or Right (OEM)
5	3546	13-03546P	Extended Hood Aluminum Bottom Grille Piece (OEM)
6A	3508	13-03508	Extended Hood Grille Insert ( <u>RECTANGULAR W/ VERTICAL BARS</u> ) (OEM)
6B	3509	N/A	Extended Hood <u>OVAL</u> Grille Insert
7	3531	13-03531P	Extended Hood Aluminum Grille Trim, Upper (OEM)
8	3529	13-035429	Extended Hood Aluminum Grille Trim, Lower (OEM)
9	7251	N/A	Complete Stainless <u>CARRIAGE BOLT</u> Kit for Grille & Surround
10	7252	N/A	Complete Stainless <u>HUCK RIVET</u> Kit for Grille & Surround
11	4346	13-04346	Extended Hood Bug Screen

# PETERBILT 379 SHORT (119") HOOD PANELS



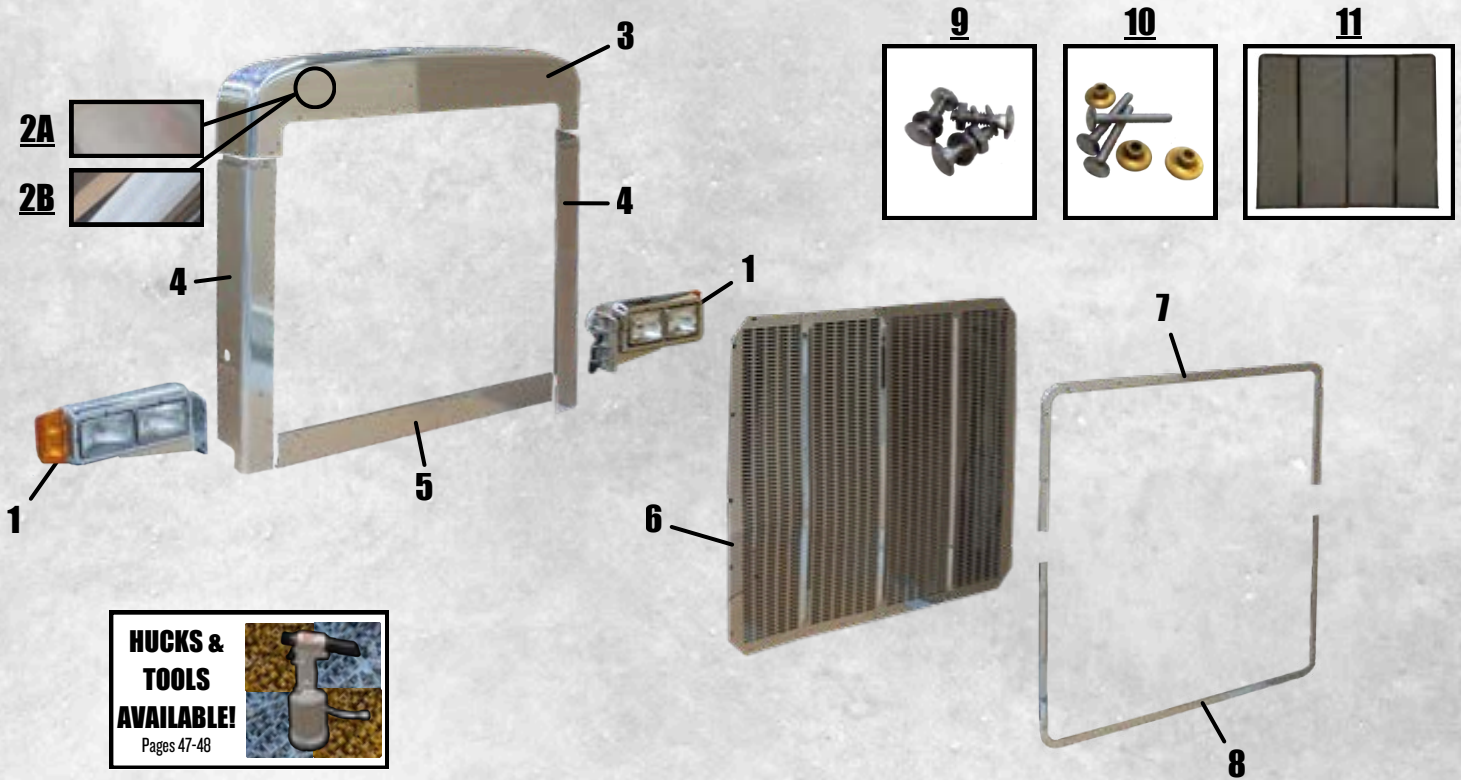
	TS PART NO.	OEM PART NO.	DESCRIPTION
1	4332L/R	13-04332L/R	Top Skin, Left or Right (OEM)
2	4399	13-04399	Center Hood Strip (OEM)
3	4866L/R	13-04866L/R	Hood Insulation, Left or Right
4	3584L/R	13-03584L/R	Side Skin, Left or Right
5	4402L/R	13-04402L/R	Lower Inner Skirt, Left or Right (OEM)
6	3576L/R	13-03576L/R	Inner Side Panel, Left or Right (OEM)
6A	3576L/R-I	13-03576L/R	Inner Side Panel, Left or Right Rivnuts Installed
7	3857	23-13857	Hood Latch Kit (Pair)
8	4393	13-04393	Hood Latch Catch Bracket (Single)

**LOOKING FOR LITTLEBIGHOOD?**

Check out Pages 17-18 For More Information

# PETERBILT 379

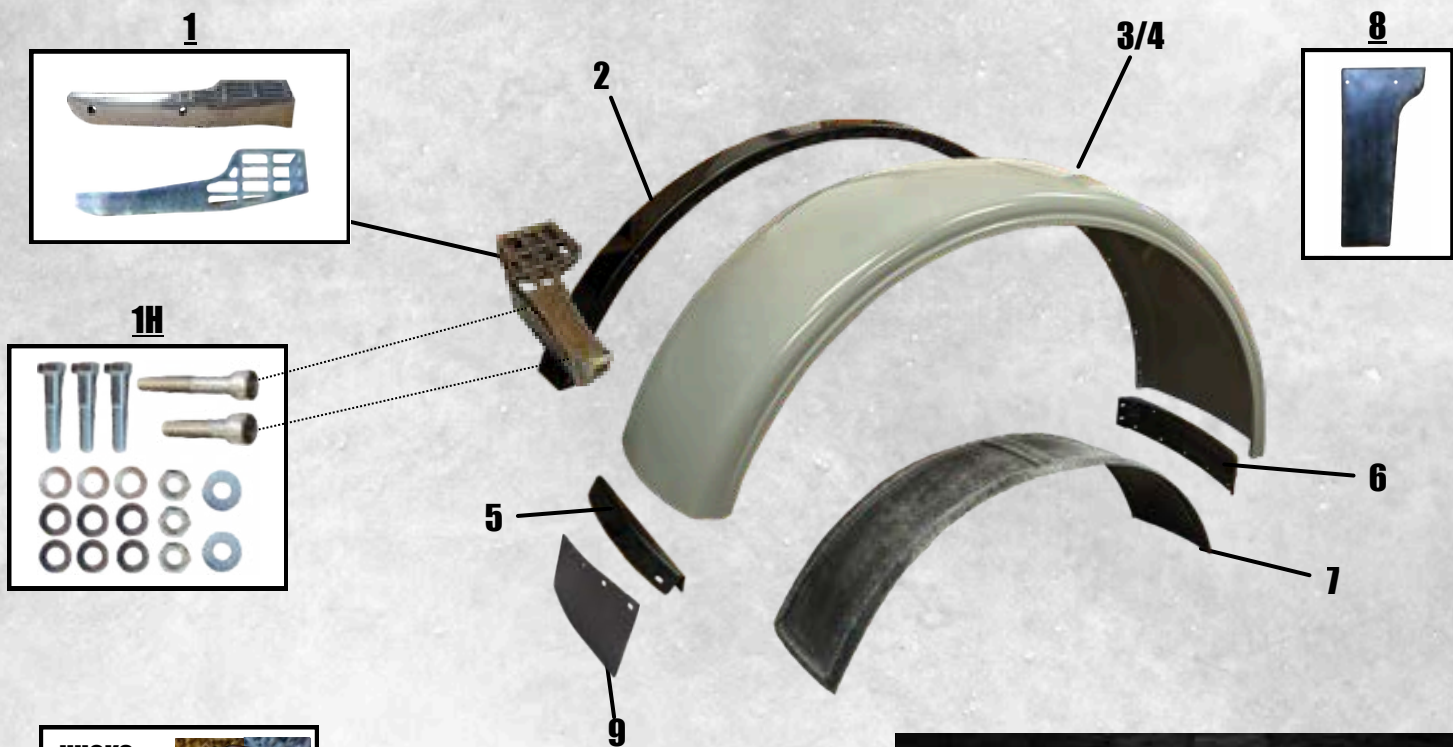
## SHORT (119") HOOD GRILLE & HEADLIGHTS



**HUCKS & TOOLS AVAILABLE!**  
Pages 47-48

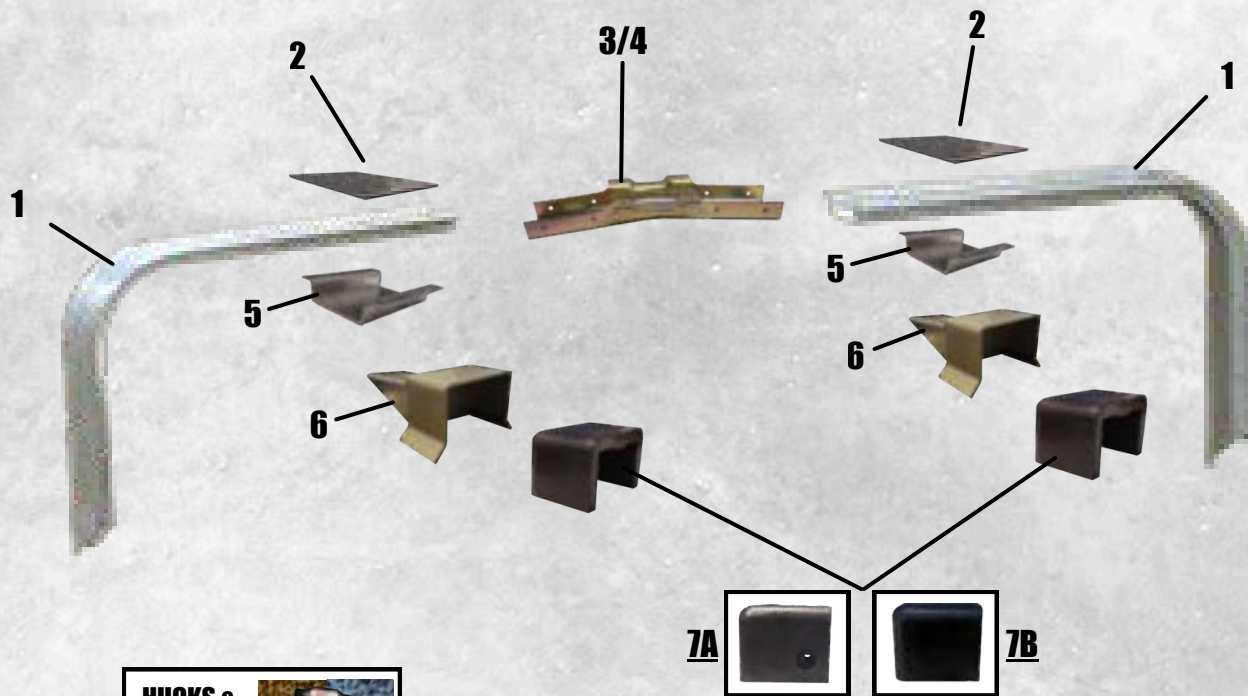
	<b>TS PART NO.</b>	<b>OEM PART NO.</b>	<b>DESCRIPTION</b>
1	7572L/R	16-07572L/R-P	Headlight Assembly, Left or Right (OEM)
2A	7270	N/A	Complete Short Hood <u>ALUMINUM</u> Grille Surround (OEM, 2.5mm Thickness)
2B	7240	N/A	Complete Short Hood <u>STAINLESS STEEL</u> Grille Surround (1.0mm Thickness)
3	3514	13-03514P	Short Hood Grille Crown (OEM)
4	3963L/R	13-03963M001L/R	Short Hood Aluminum Side Grille Piece, Left or Right (OEM)
5	3546	13-03546P	Short Hood Aluminum Bottom Grille Piece (OEM)
6	3507	13-03507	Short Hood Grille Insert (OEM)
7	3530	13-03530P	Short Hood Aluminum Grille Trim, Upper (OEM)
8	3529	13-03529	Short Hood Aluminum Grille Trim, Lower (OEM)
9	7251	N/A	Complete Stainless <u>CARRIAGE BOLT</u> Kit for Grille & Surround
10	7252	N/A	Complete Stainless <u>HUCK RIVET</u> Kit for Grille & Surround
11	4345	13-04345	Short Hood Bug Screen

# PETERBILT 379 FENDERS & COMPONENTS



	TS PART NO.	OEM PART NO.	DESCRIPTION
1	6003L/R	L82-6003/R-P	Front Fender Step, Left or Right
1H	H6003	N/A	Hardware Kit for Front Fender Step
2	3590L/R	13-03590L/R	Fender Support, Left or Right (OEM)
3	4905L/R	15-04905L/R	Front Fender- <u>ALUMINUM</u> , Left or Right
4	4905L-F/R-F	15-04905L/R	Front Fender- <u>FIBERGLASS</u> , Left or Right
5	5476	15-05476	Front Fender Brace
6	4904L/R	15-04904L/R	Rear Fender Brace, Left or Right
7	6080	15-06080	Fender Liner
8	5181L/R	15-05181L/R	Fender Side Skirt
9	5477	15-05477	Splash Guard Front Fender

# PETERBILT 379 BRIDGE BRACKETS



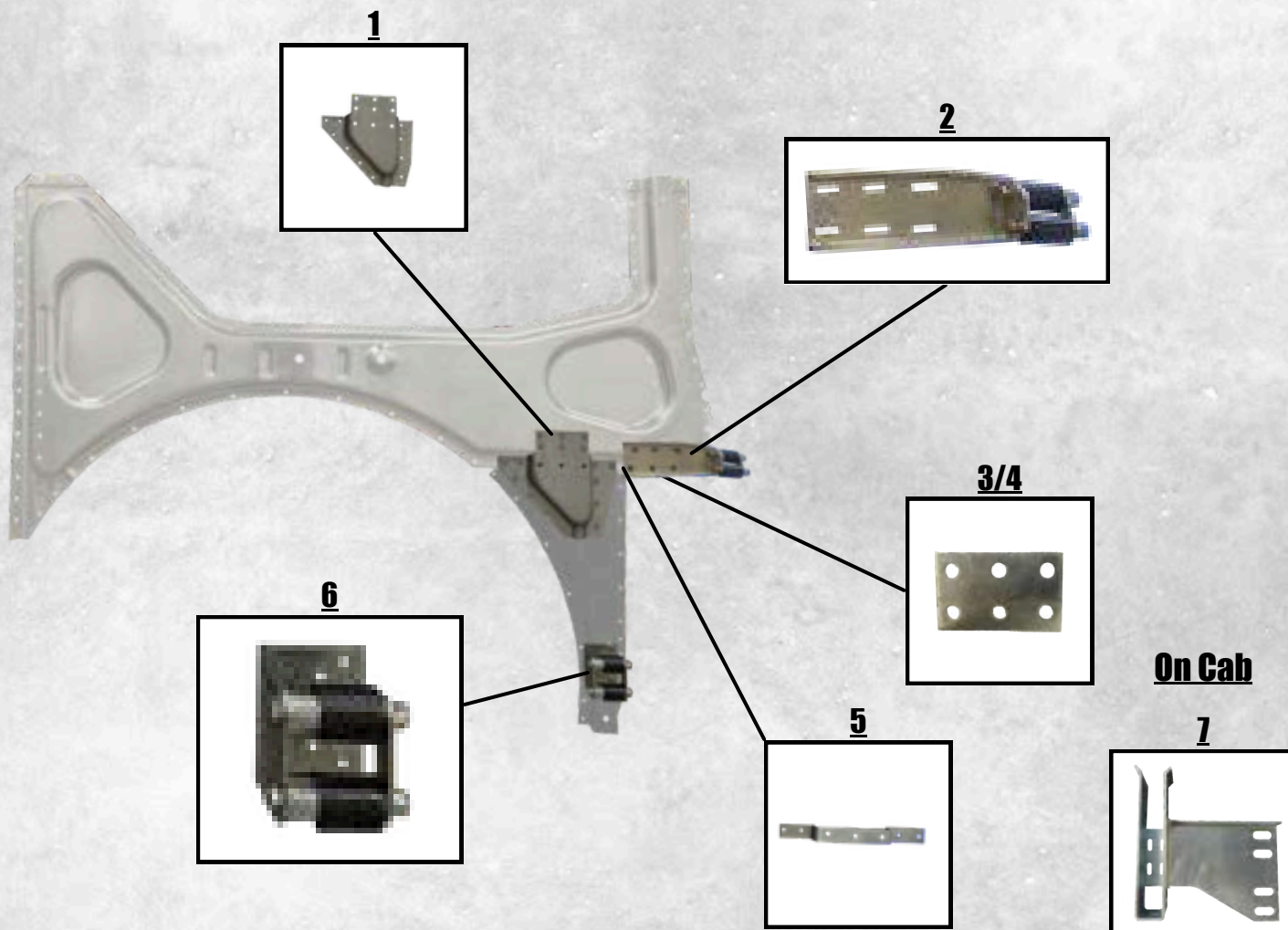
**HUCKS &  
TOOLS  
AVAILABLE!**  
Pages 47-48



	<b>TS PART NO.</b>	<b>OEM PART NO.</b>	<b>DESCRIPTION</b>
1	4506L/R	13-04506L/R	Rear Bridge Piece, Left or Right (OEM)
2	4505	13-04505	Plate - Bridge Stiffener Hood
3	4757	13-04757	Bridge Bracket - <u>EXTENDED HOOD</u> (OEM)
4	4756	13-04756	Bridge Bracket - <u>SHORT HOOD</u> (OEM)
5	4504	13-04504	Stiffener - Upper Receptacle (OEM)
6	4507L/R	13-04507L/R	Support Receptacle, Left or Right
7A	3510	13-03510	Upper Hood Rest/Bumper ( <u>BEFORE 2000</u> )
7B	4711	13-04711	Upper Hood Rest/Bumper ( <u>AFTER 2000</u> )

# PETERBILT 379

## ROLLER BRACKETS & ASSEMBLIES



	TS PART NO.	OEM PART NO.	DESCRIPTION
1	3567L/R	I3-03567L/R	Lower Bridge "Texas Square", Left or Right (OEM)
2	4386	N/A	Upper Roller Kit
3	3623	I3-03623	Roller Spacer, <u>EXTENDED HOOD ONLY</u>
4	3622	I3-03622	Roller Spacer, <u>SHORT HOOD ONLY (OEM)</u>
5	3547	I3-03547	Upper Roller Bracket Support, <u>EXTENDED HOOD ONLY</u>
6	3849L/R	N/A	Lower Roller Kit, Left or Right
7	4392L/R	I3-04392L/R	Lower Roller Receptacle, Left or Right

**Please note: if you have the old style Single Roller assemblies, you will need to convert to the new style Double Rollers.**

We have conversion kits available. Conversion kits contain both left and right side hardware.

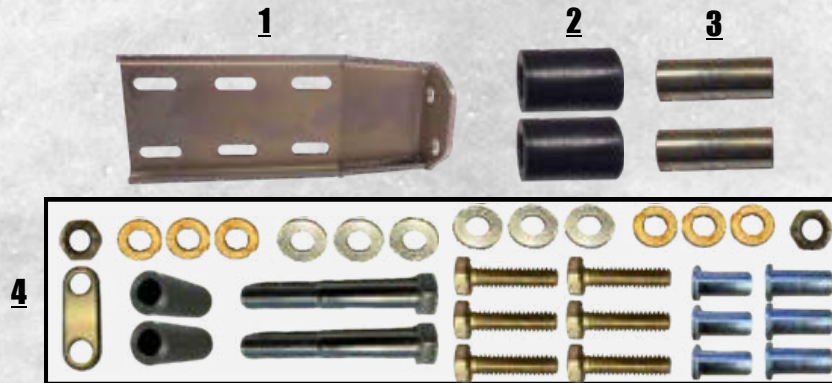
**Upper Roller Conversion Kit: 3824**

**Lower Roller Conversion Kit: 3850**

# PETERBILT 379

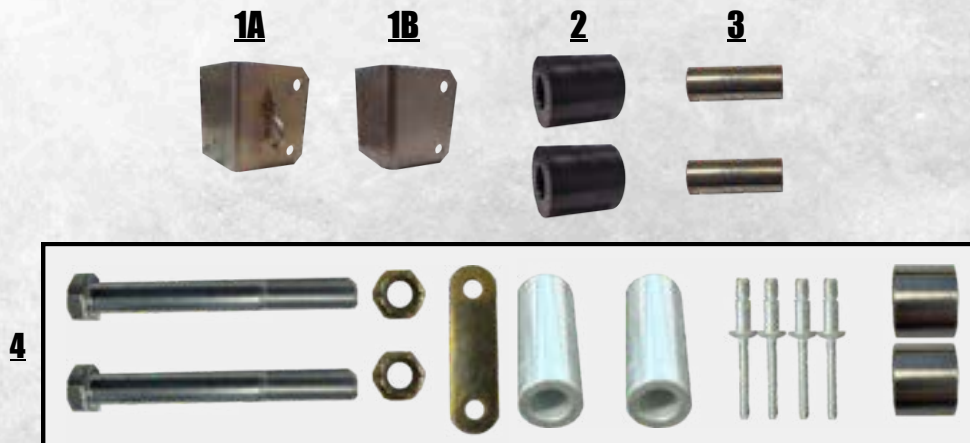
## ROLLER ASSEMBLY COMPONENTS

### Upper Roller Assembly Components



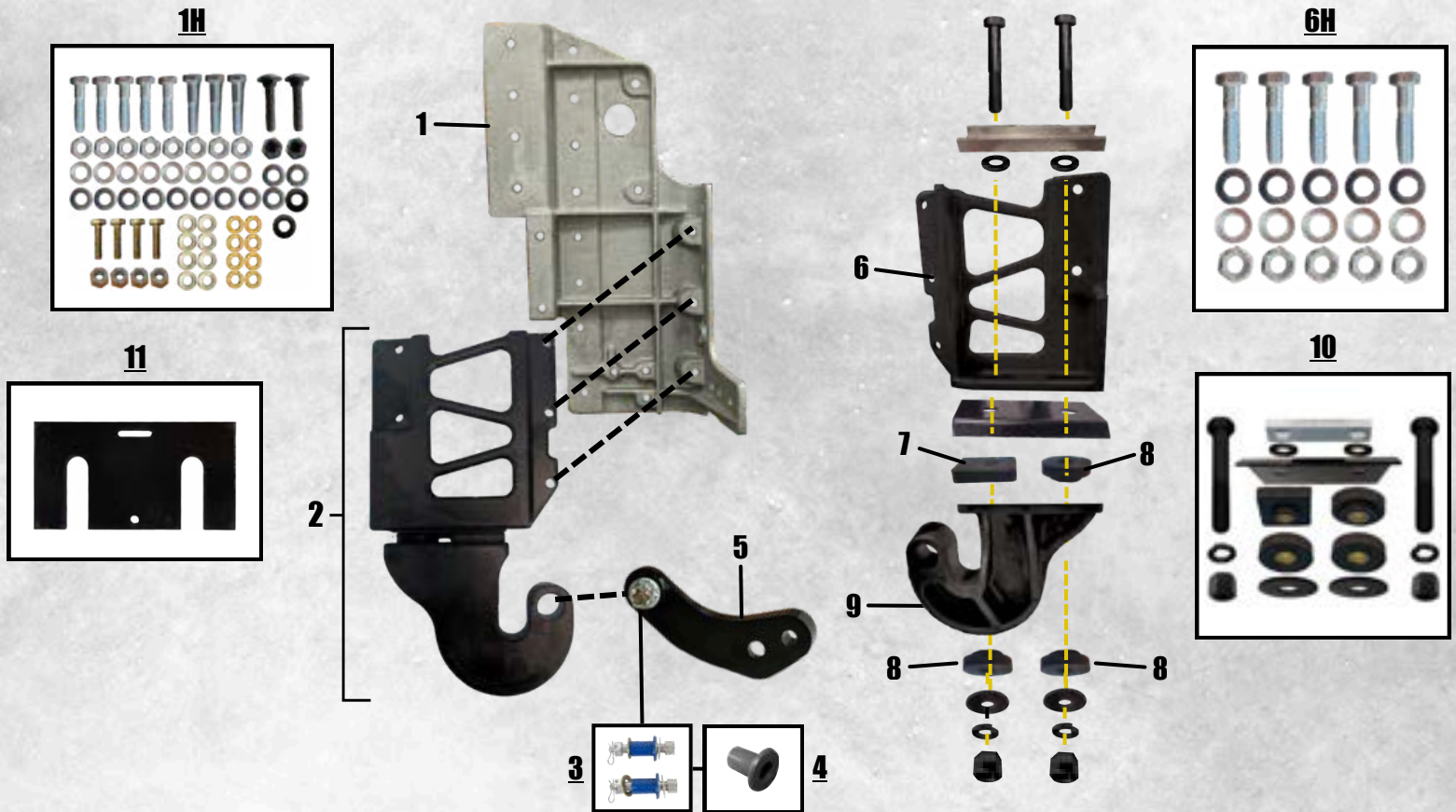
	TS PART NO.	OEM PART NO.	DESCRIPTION
1	4387	13-04387	Upper Roller Bracket
2	4391	13-04391	Upper Roller (2 needed per assembly)
3	4667	13-04667	Spacer - Inner Tube for Rollers (2 needed per assembly)
4	H4386	N/A	Hardware Kit (Does Not Include Rollers)

### Lower Roller Assembly Components



	TS PART NO.	OEM PART NO.	DESCRIPTION
1A	4401L	13-04401M001	Lower Roller Bracket, Driver Side
1B	4401R	13-04401M002	Lower Roller Bracket, Passenger Side
2	3593	13-03593	Lower Roller (2 needed per Assembly)
3	4667	13-04667	Spacer - Inner Tube (2 needed per Assembly)
4	H3849	N/A	Hardware Kit (Does Not Include Rollers)

# PETERBILT 379 PIVOT ASSEMBLIES

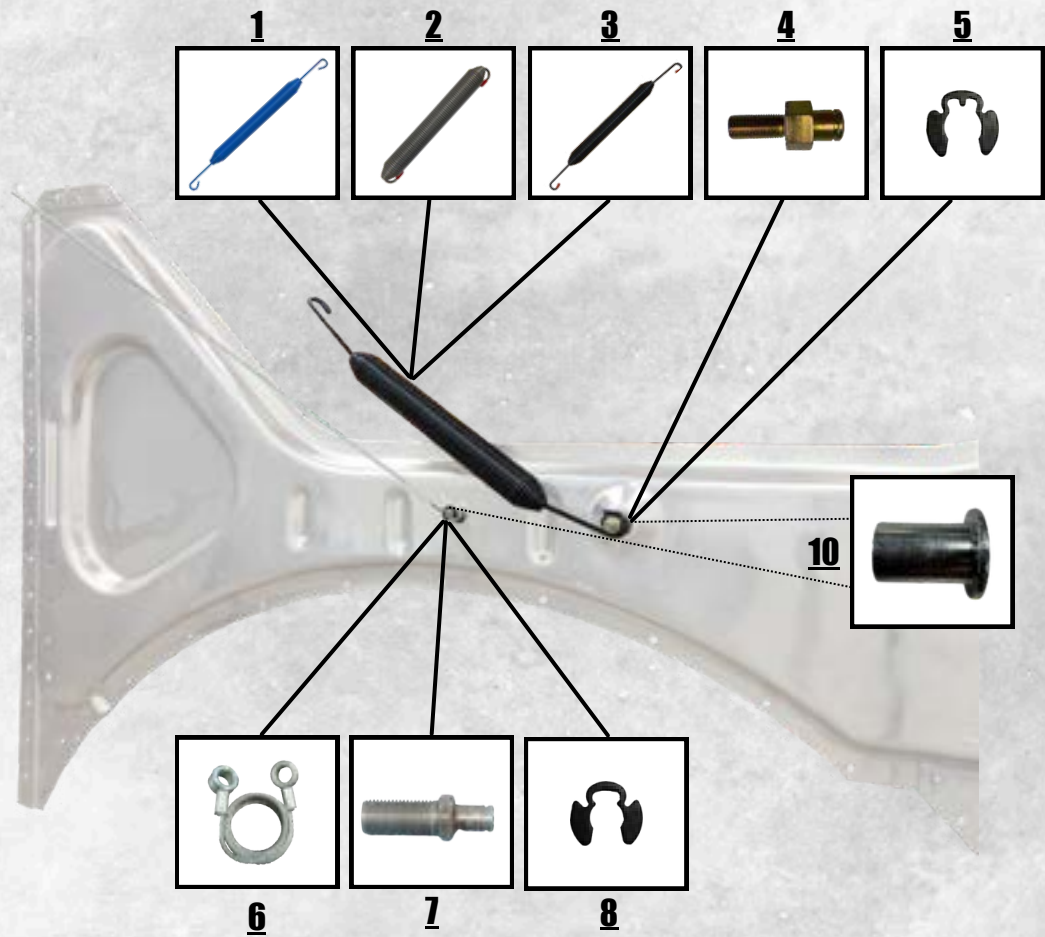


	<b>TS PART NO.</b>	<b>OEM PART NO.</b>	<b>DESCRIPTION</b>
1	4190L/R	I3-04190L/R	Front Corner Gusset, Left or Right
1H	H4190	N/A	Hardware Kit for Gusset
2	4730L/R	I3-04730L/R	Pivot Assembly, Left or Right
3	5273	25-15273	Pivot Bolt Kit (Pair, Bushing Sleeves Included)
4	4726	I3-04726	Pivot Bushing Sleeve (1 Per Bolt)
5	4626L/R	L48-6026	Pivot Mount, Left or Right
6	4286L/R	I3-04286L/R	Upper Pivot Bracket (OEM)
6H	H4286	N/A	Hardware Kit for Upper Pivot Bracket
7	4164	I3-04164	Hinge Bushing - Square (1 Per Assembly)
8	4154	I3-04154	Hinge Bushing - Round (3 Per Assembly)
9	4708L/R	I3-04708L/R	Lower Pivot Bracket "J" Hook (OEM)
10	H4730	N/A	Hardware and Bushing Kit for Pivot Assembly
11	4195	I3-04195	Pivot Assembly Shim Plate

# PETERBILT 379

## CABLES, STUDS, & SPRINGS

**On Radiator Frame:**



	<b>TS PART NO.</b>	<b>OEM PART NO.</b>	<b>DESCRIPTION</b>
1	4638	I3-04638	Hood Spring (Blue)
2	3879	I3-03879	Hood Spring (Grey)
3	3569	I3-03569	Hood Spring (Black)
4	3662	I3-03662	Spring Stud
5	5305	P062STPA	Spring Stud Retaining Ring
6	6000	L92-6000-0718	Hood Restraint Cable - 718mm
7	3663	I3-03663	Cable Stud
8	5304	P037ST-PAS	Cable Stud Retaining Ring
9	3761	I3-03761	Spring/Cable Stud
10	H7260	HWC07260	1/2 - 20 Rivnut for Spring and Cable Stud

# PETERBILT 379

## LITTLEBIGHOOD CONVERSION

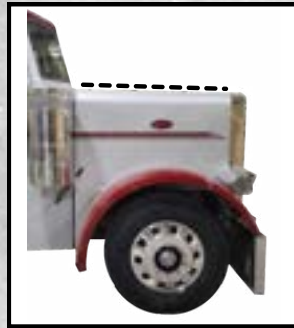
### What is a Little Big Hood?

A Little Big Hood reduces the slope of the 379 Short Hood to give it that classic look.

**BEFORE**



**AFTER**



*Classic Kit*

**CUSTOM KIT**



Photo Courteous of Peasterbilt



Photo Courteous of Curtis Smith

Includes

Includes

Pair of Little Big Hood Panels



Pair of Little Big Hood Panels



Aluminum Surround



Factory Style Screen



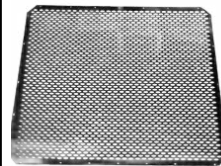
Aluminum Grille Trims



Chrome Surround



Oval Style Screen



Aluminum Grille Trims



**HUCKS & TOOLS AVAILABLE!**  
Pages 47-48



**Protect Your Investment With Hood Insulation**



**HUCKS & TOOLS AVAILABLE!**  
Pages 47-48



**Protect Your Investment With Hood Insulation**



\*Add on Item, not included in Kit

\*Add on Item, not included in Kit

\*Add on Item, not included in Kit

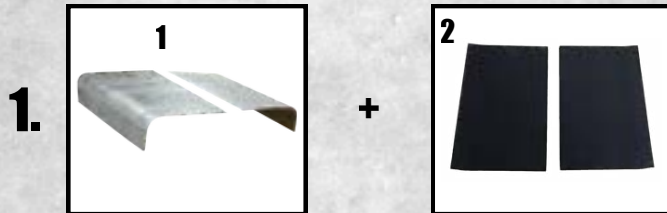
\*Add on Item, not included in Kit

# PETERBILT 379

## LITTLEBIGHOOD CONVERSION

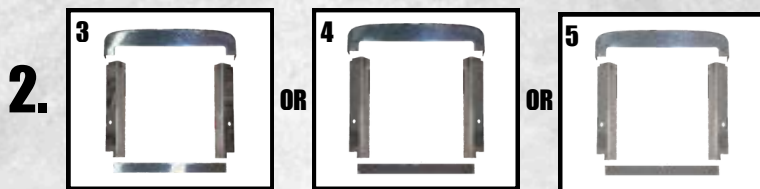
### BUILD YOUR OWN KIT

#### Replace Hood Top Panels



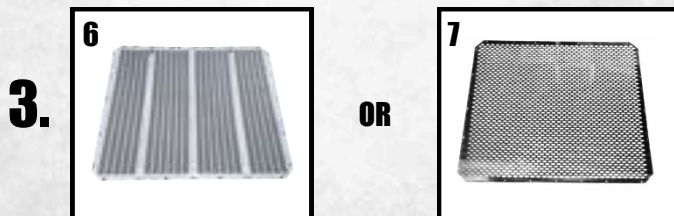
	TS PART NO.	DESCRIPTION
1	4331L/R	Truck Shrouds, LLC Little Big Hood Panels (Pair)
2	4866L/R	Hood Insulation (Optional)

#### Your Choice of Extended Hood Grille Surround



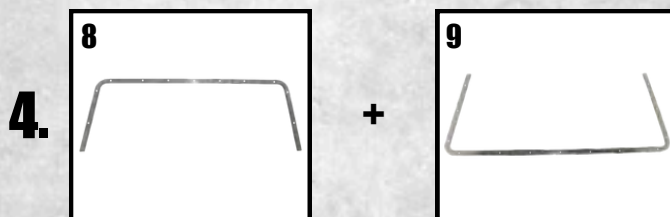
	TS PART NO.	DESCRIPTION
3	7250	Stainless Steel Grille Surround
4	7260	Aluminum Grille Surround (OEM)
5	7265	Chrome Grille Surround

#### Your Choice of Extended Hood Grille Insert



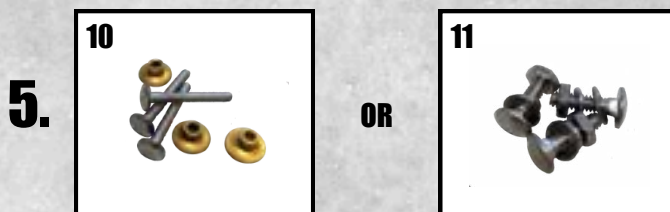
	TS PART NO.	DESCRIPTION
6	3508	Extended Hood Grille Screen (OEM)
7	3509	Extended Hood Grille Screen-Oval Style

#### Extended Grille Trim



	TS PART NO.	DESCRIPTION
8	3531	Aluminum Grille Trim, Upper (OEM)
9	3529	Aluminum Grille Trim, Lower (OEM) (Optional)

#### Hardware for Grille



	TS PART NO.	DESCRIPTION
10	7252	Stainless <u>HUCK RIVET</u> Kit for Grille & Surround
11	7251	Stainless <u>CARRIAGE BOLT</u> Kit for Grille & Surround

# CUSTOM 379 FENDERS



## Colt .45s

4.5" Side Drop  
Made out of Fiberglass  
Built in Mesh Liner  
3.5" Longer Than Factory



## Gladiators

7" Side Drop  
Made out of Fiberglass  
Built in Mesh Liner  
10" Longer Than Factory  
\*WILL ONLY FIT EXTENDED HOODS\*



## Vipers

8" Side Drop  
Made out of Fiberglass  
Built in Mesh Liner  
5" Longer Than Factory

# BIG HOLE CONVERSION

— DON'T LET COMFORT CRAMP YOUR STYLE

MORE LEGROOM. EASIER ACCESS.  
**REAL COMFORT.**

## WHAT IS A BIG HOLE CONVERSION?

A Big Hole Conversion enlarges the factory sleeper opening on a pre-Unibilt truck, creating a full walkthrough between the cab and sleeper for increased leg room and comfort.



### BEFORE SMALL HOLE

Tight opening making it impossible to push your seat further back leading to cramped and uncomfortable ride



### AFTER BIG HOLE

A full walkthrough opening gives you the freedom to push your seat back as much as you want for a more comfortable ride



Aluminum Ring

Aluminum Ring

Rubber Boot



TS PART NO.	OEM PART NO.	QTY NEEDED	DESCRIPTION
6009	R4I-6009	2	Aluminum Walkthrough Ring
6002	T09-6002	1	Rubber Boot
H6009	n/a	1	Huck / Rivet Kit for Install

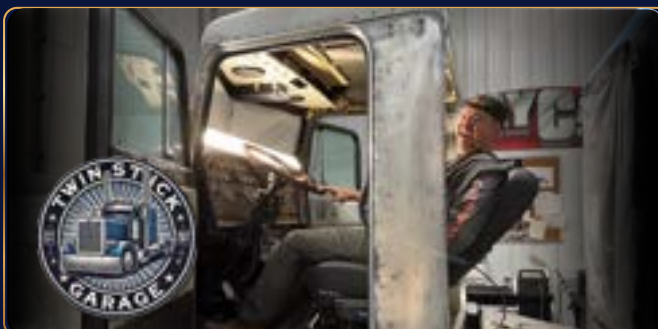
 **Need the Tools? Huck Guns Available for Sale or Rent**

## FEATURED ON TWINSTICK GARAGE

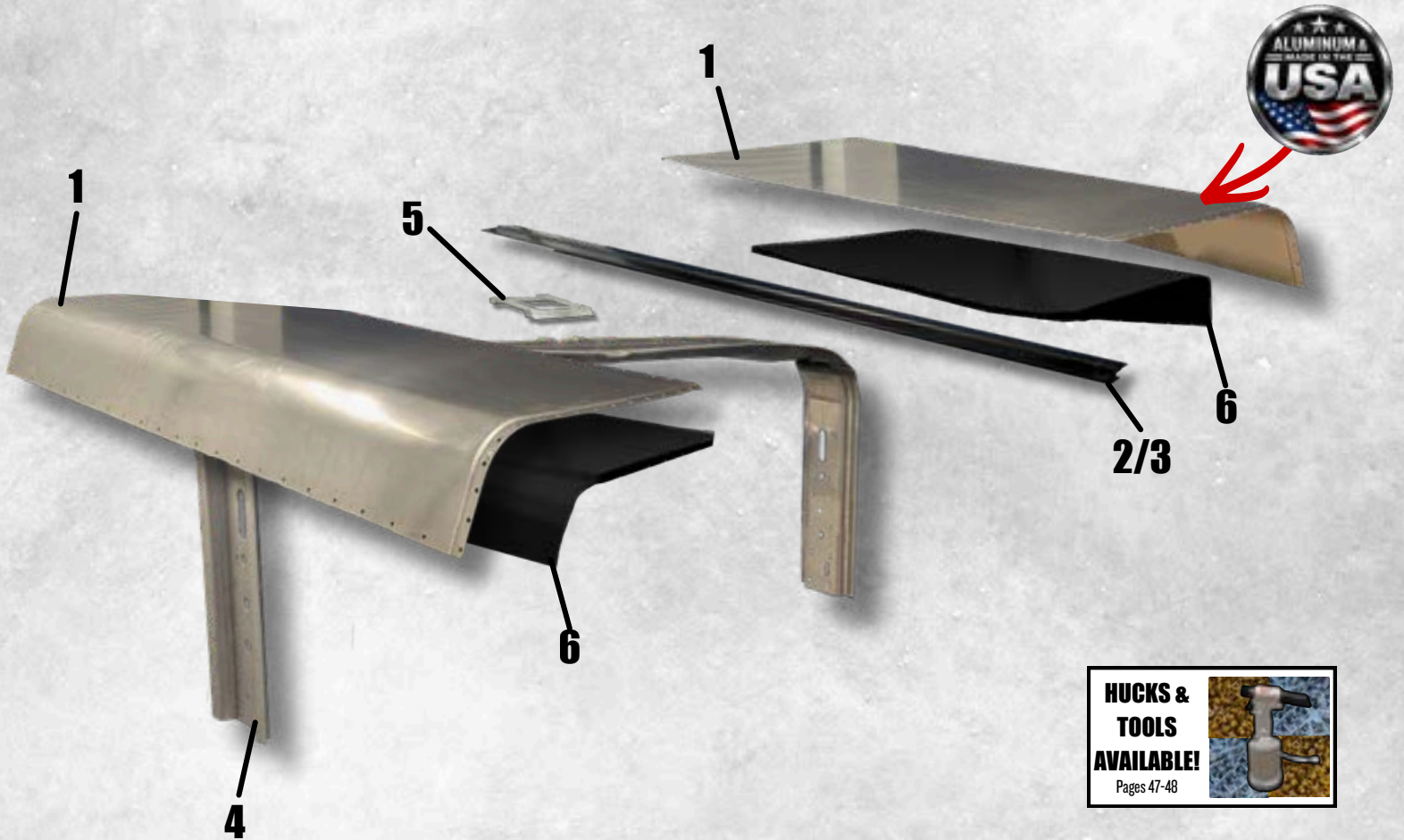
Watch Mark from Twin Stick Garage Install a Big Hole Conversion on His Peterbilt 359

 **YouTube** / @TwinStix

**SCAN TO WATCH  
THE INSTALL VIDEOS**



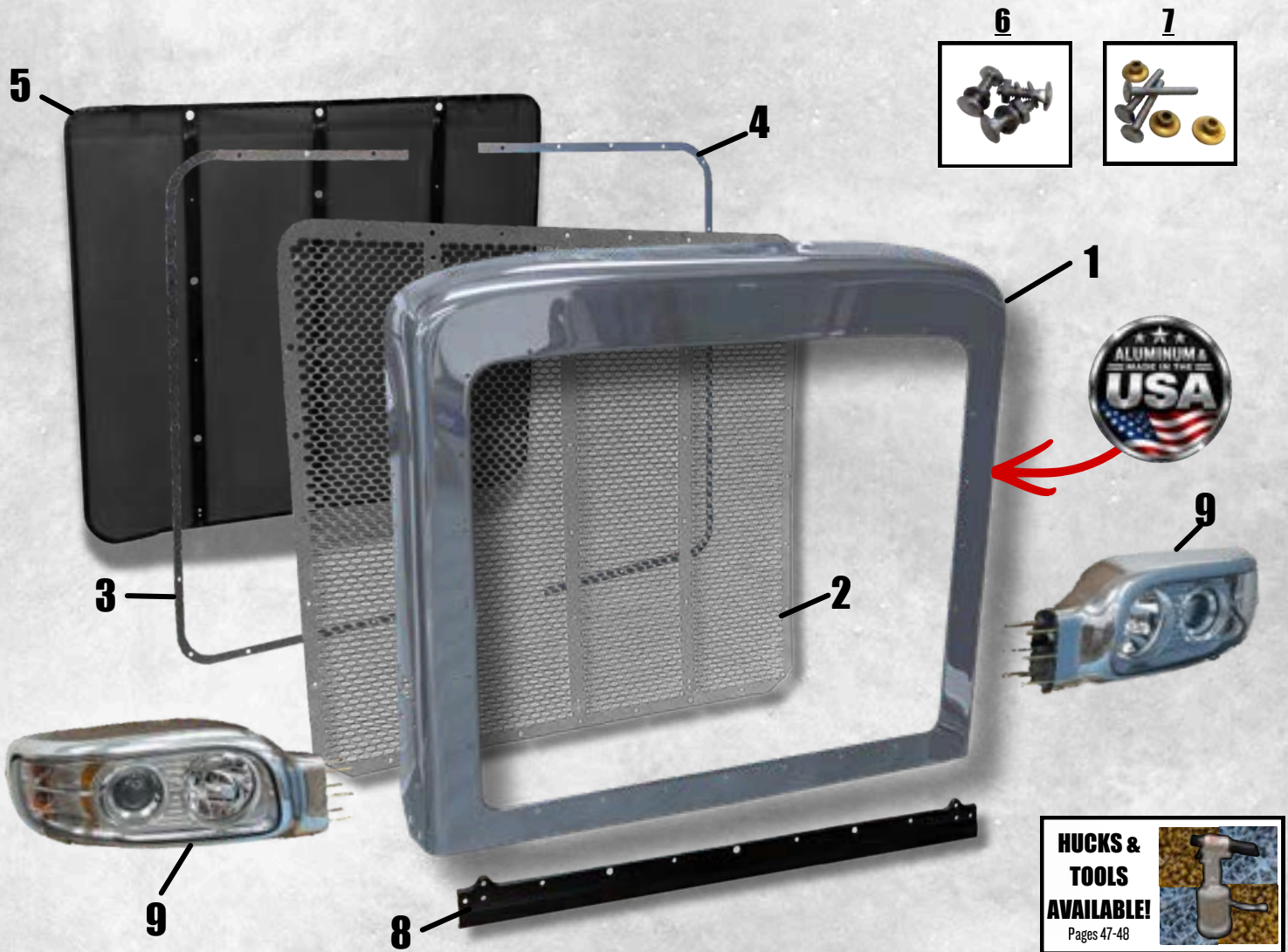
# PETERBILT 388/389 Top Panels & Bridge Brackets



**2A**

	TS PART NO.	OEM PART NO.	DESCRIPTION
1	6073L/R	L79-6073/R	Top Skin, Left or Right - Long Hood 131" ONLY
2	8049	L85-6049	Center Hood Strip - Long Hood 131" ONLY (OEM)
2A	8049P	L85-6112	Center Hood Strip Polished - Long Hood 131" ONLY(OEM)
3	8048	L85-6048	Center Hood Strip - Standard Hood / 388 123" ONLY (OEM)
4	8050	L85-6050	Upper Hood Bridge (OEM)
5	8033	L80-6033	Upper Hood Bridge Spacer (OEM)
6	6007L/R	L72-6007	Hood Insulation Foam, Left or Right (Sold Separately)

# PETERBILT 388/389 GRILLE & HEADLIGHTS



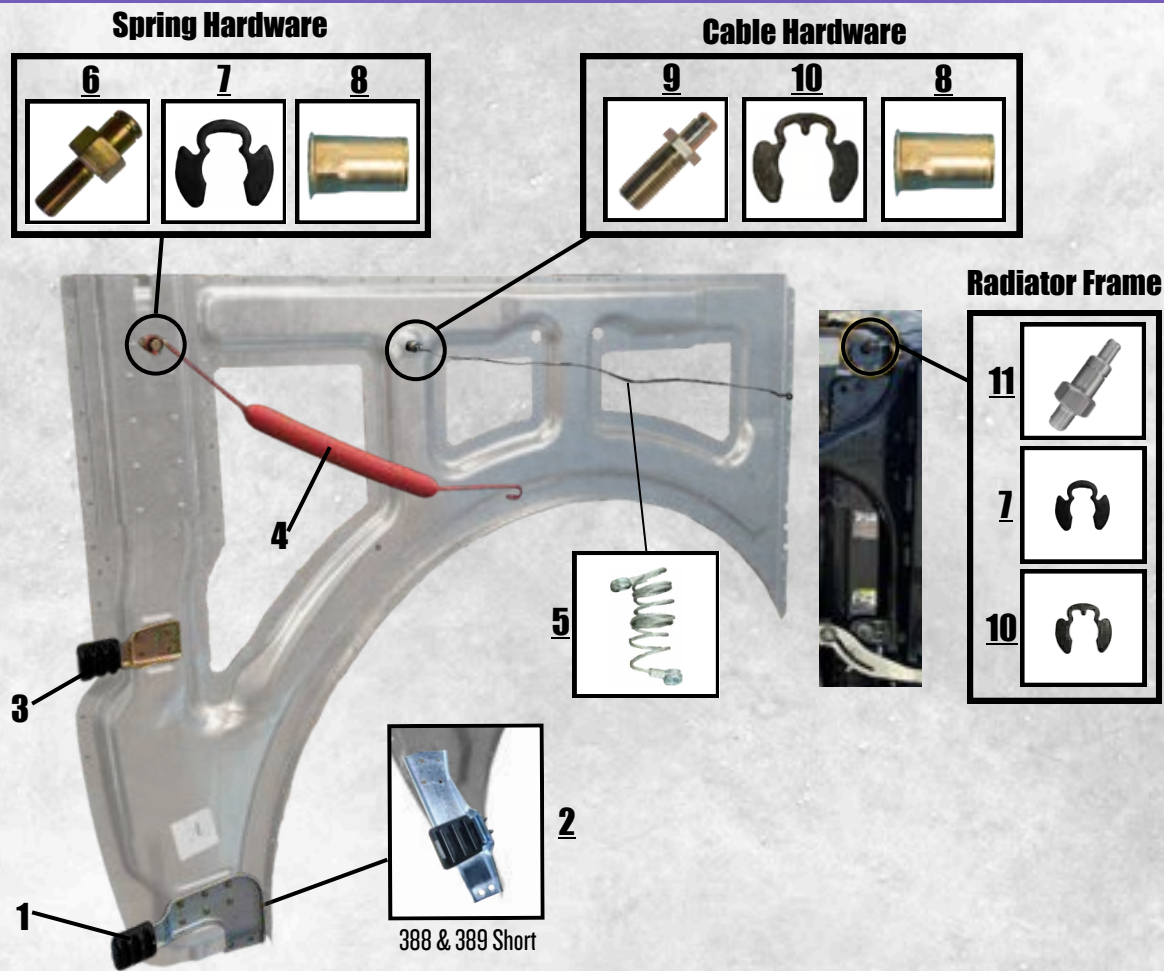
	<b>TS PART NO.</b>	<b>OEM PART NO.</b>	<b>DESCRIPTION</b>
1	6081	L29-6081m01	Polished Aluminum Grille Surround
2	4560	L45-6033	Stainless Steel Grille Insert - Factory Style
3	6021	L80-6021	Grille Trim / Washer Bar, Passenger Side
4	6022	L80-6022	Grille Trim / Washer Bar, Driver Side
5	8020	L46-6020	Bug Screen (OEM)
6	7251	N/A	Complete Stainless CARRIAGE BOLT Kit for Grille & Surround
7	7253	N/A	Complete Stainless HUCK RIVET Kit for Grille & Surround
8	8009	L24-6009	Crossmember (OEM)
9	6112L/R	P54-6166-110/R	Headlight Assembly, Left or Right (OEM)

# PETERBILT 388/389 FENDER COMPONENTS



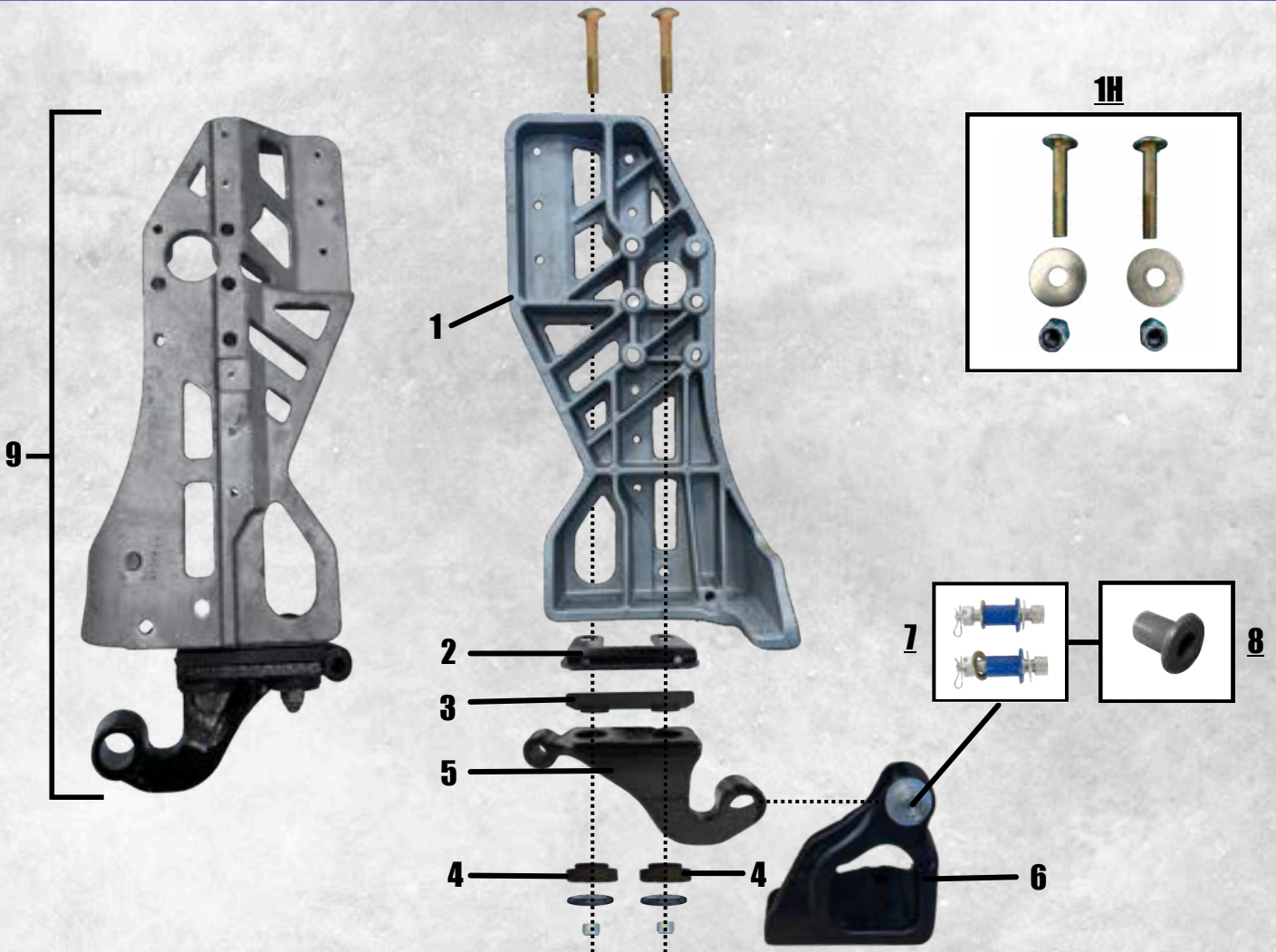
	<b>TS PART NO.</b>	<b>OEM PART NO.</b>	<b>DESCRIPTION</b>
1	6035L/R-F	L35-6035m00/R	Front Fender, Left or Right - FIBERGLASS
2	6004L/R	L52-6004/R	Fender Liner, Left or Right - FIBERGLASS
3	6036L/R	L85-6036/R	Front Fender Support, Left or Right

# PETERBILT 388/389 GUIDES, CABLES, SPRINGS, & STUDS



	TS PART NO.	OEM PART NO.	DESCRIPTION
1	6131L/R	L11-6131/R	Lower Hood Guide, Left or Right (389 LONG HOOD)
2	6167L/R	L11-6167/R	Lower Hood Guide, Left or Right (388/389 SHORT HOOD)
3	6133	L11-6133	Upper Hood Guide
4	6009S	L81-6009	Hood Spring - Red (389 LONG HOOD)
5	6017	L92-6017-1065	Hood Restraint Cable
6	3662	I3-03662	Spring Stud
7	5305	P062STPA	Spring Retaining Clip
8	H4820	AHS4-820-200	1/2"-20 Hexnut
9	3663	I3-03662	Cable Stud
10	5304	P037ST-PAS	Cable Retaining Clip
11	I315	N9382001	Spring and Cable Stud

# PETERBILT 388/389 HINGE & PIVOT COMPONENTS



	<b>TS PART NO.</b>	<b>OEM PART NO.</b>	<b>DESCRIPTION</b>
1	6041L/R	L85-6041/R	Front Corner Gusset, Left or Right
1H	H6041	N/A	Hardware Kit Bushings and Lower Pivot (Pictured)
2	6011	L80-6011	Pivot Spacer
3	6006	L13-6006	Upper Bushing
4	4154	I3-04154	Lower Bushings
5	4709L/R	L48-6034 / L48-6033	Lower Pivot Bracket, Left or Right (OEM)
6	6029L/R	L48-6029/R	Lower Pivot Mount, Left or Right
7	5273	23-15273	Pivot Bolt Kit, Pair (comes with #8)
8	4726	I3-04726	Pivot bushing for Pivot Bolts
9	8730L/R	N/A	Pivot Assembly (Includes Items 1-5)

# OEM SURPLUS

## WANT MORE PARTS?

### RANDOM PARTS, GREAT DEALS



Truck Shrouds has secured a large inventory of factory surplus parts and passing on huge savings of 50% or more on most items. This was a one time buy so once they are gone, they are gone.



#### OEM QUALITY

Genuine Factory Surplus Parts



#### GREAT DEALS

Huge Savings on 100s of Parts



#### LIMITED AVAILABILITY

Once These Parts Are Gone, They Are Gone



**389X  
Inner Panel**

OEM Part#  
L77-6354



**Kenworth Hinge  
Bracket**

OEM Part#  
L11-1128



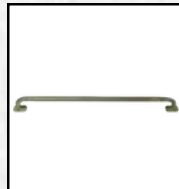
**Stand Pipe  
Exhaust 5" to 7"**

OEM Part#  
M66-7002-3450



**Peterbilt Battery  
Box Cover**

OEM Part#  
N22-6150-220



**Pete & KW  
Grab Handle**

OEM Part#  
R56-1157-222



**Peterbilt Fuel  
Tank Step**

OEM Part#  
11-04006-0825



**Hood  
Elastometric**

OEM Part#  
L48-6079



### CHECK OUT OUR FULL INVENTORY ONLINE

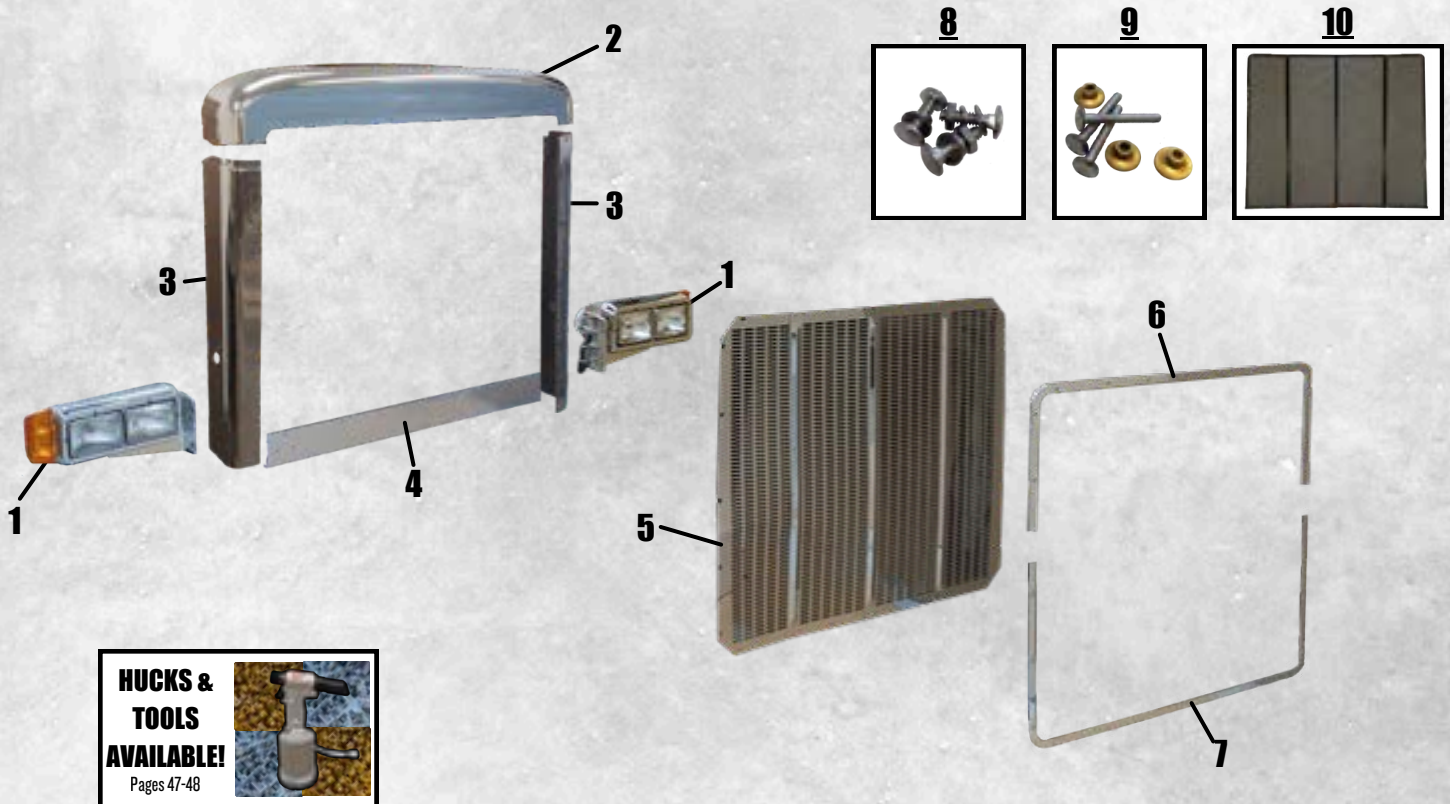
100s of Parts, Including:

- ✓ Grab Handles
- ✓ Exhaust Pipes
- ✓ Battery & Tool Box Parts
- ✓ Hood Components
- ✓ Internal Brackets



*Scan To Shop  
Surplus Inventory!*

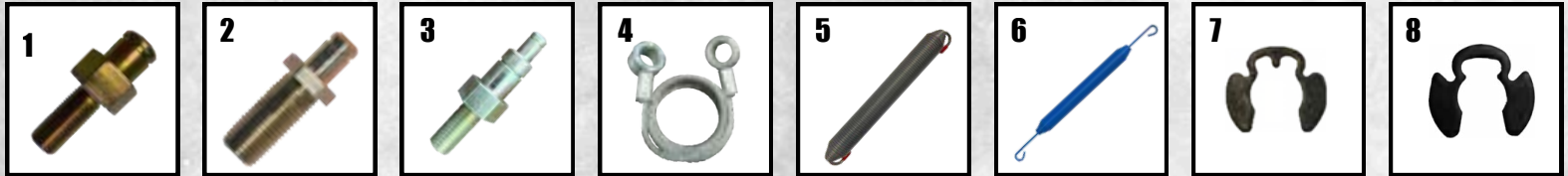
# PETERBILT 378 & 357 SFA HOOD GRILLE & HEADLIGHTS



	<b>TS PART NO.</b>	<b>OEM PART NO.</b>	<b>DESCRIPTION</b>
1	7572L/R	16-07572L/R	Headlight Assembly, Left or Right (OEM)
2	3513	13-03513P	Aluminum Grille Crown for Peterbilt 378 (OEM)
3	3962L/R	13-03962M001L/R	Hood Aluminum Side Grille Piece, Left or Right (OEM)
4	3546	13-03546P	Aluminum Bottom Grille Piece (OEM)
5	3507	13-03507	Hood Grille Insert (OEM)
6	3530	13-03530P	Hood Aluminum Grille Trim, Upper (OEM)
7	3529	13-03529	Hood Aluminum Grille Trim, Lower (OEM)
8	7251	N/A	Complete Stainless <u>CARRIAGE BOLT</u> Kit for Grille & Surround
9	7252	N/A	Complete Stainless <u>HUCK RIVET</u> Kit for Grille & Surround
10	4345	13-04345	Bug Screen

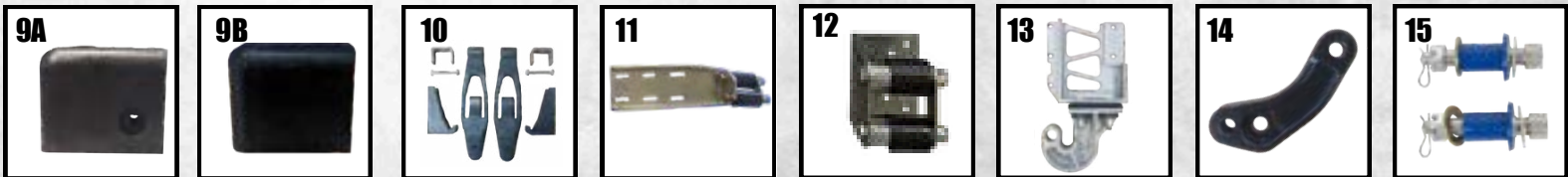
# PETERBILT 378 & 357 SFA HOOD COMPONENTS

## Cable, Spring, & Studs (More Components on Page 15)



	TS PART NO.	OEM PART NO.	DESCRIPTION
1	3662	I3-03662	Spring Stud
2	3663	I3-03663	Cable Stud
3	3761	I3-03761	Spring/Cable Stud (Mounts on Radiator Frame)
4	6000	L92-6000-0718	Hood Restraint Cable - 718mm
5	3879	I3-03879	Hood Spring (Grey)
6	4638	I3-04638	Hood Spring (Blue)
7	5304	P037ST-PAS	Retaining Ring for Cable
8	5305	P062STPA	Retaining Ring for Spring

## Additional Hood Components



More on Page 12

More on Page 13

	TS PART NO.	OEM PART NO.	DESCRIPTION
9A	3510	I3-03510	Upper Hood Rest/Bumper - Bolt On (BEFORE 2000)
9B	4711	I3-04711	Upper Hood Rest/Bumper - Slide On (AFTER 2000)
10	3857	23-13857	Hood Latch Kit (Pair)
11	4386	n/a	Upper Roller Assembly Kit
12	3849L/R	n/a	Lower Roller Assembly Kit, Left or Right
13	4730L/R	I3-04730L/R	Pivot Assembly, Left or Right
14	4626L/R	L48-6026L/R	Pivot Mount, Left or Right
15	5273	25-15273	Pivot Bolt Kit (Pair, Bushings Sleeves Included)

# PETERBILT CAB SIDE SKINS

## 1995 - 2005

FOR MODELS: 357 - 365 - 367 - 377 - 378 - 379 - 384 - 385 - 386 - 388 - 389

### Driver Side



	TS PART NO.	OEM PART NO.	CUTOUTS
4	6235L-0	20-16235M000	No Cut Outs
5	6235L-1	20-16235M001	Air Cleaner
6	6235L-2	20-16235M002	Air Cleaner, A/C Wire

### Passenger Side



	TS PART NO.	OEM PART NO.	CUTOUTS
1	6809R-1	20-16809M001	Air Intake
2	6809R-3	20-16809M003	Air Intake, Air Cleaner
3	6809R-6	20-16809M006	Air Intake, Air Cleaner, A/C Wire

## 2005-2024

FOR MODELS: 357 - 365 - 367 - 377 - 378 - 379 - 384 - 385 - 386 - 388 - 389

### Driver Side



	TS PART NO.	OEM PART NO.	CUTOUTS
10	6025L-1	R79-6025-10000	Mirror
11	6025L-2	R79-6025-11000	Air Cleaner, Mirror
12	6025L-3	R79-6025-11100	Air Cleaner, Mirror, A/C Wire

### Passenger Side



	TS PART NO.	OEM PART NO.	CUTOUTS
7	6064R-2	R79-6064-110000	Air Intake, Mirror
8	6064R-3	R79-6064-111000	Air Intake, Air Cleaner, Mirror
9	6064R-4	R79-6064-111100	Air Intake, Air Cleaner, Mirror, A/C Wire

## 2005-2013

FOR MODELS: 330 - 335 - 337 - 348



	TS PART NO.	OEM PART NO.	CUTOUTS
13	6028L	R79-6028	Mirror
14	6028R	R79-6029	Air Intake, Mirror

**HUCKS &  
TOOLS  
AVAILABLE!**  
Pages 47-48



# PETERBILT CAB DOOR SKINS & HANDLES

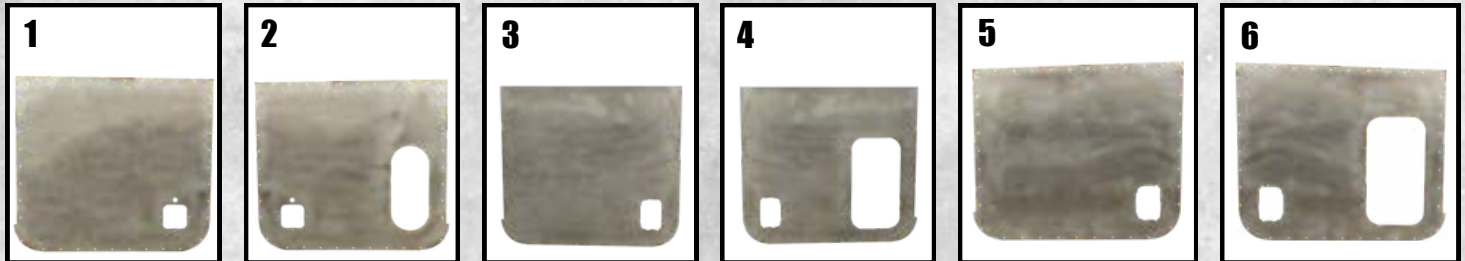
FOR MODELS: 330 - 335 - 337 - 348 - 357 - 365 - 367 - 377 - 378 - 379 - 384 - 385 - 386 - 388 - 389

## Cab Door Skins

**PRE-2005**

**2005-2008**

**2008-PRESENT**



	<b>TS PART NO.</b>	<b>OEM PART NO.</b>	<b>DESCRIPTION</b>
1	7896L	20-17896M00	Outer Door Skin W/O View Window, Old Style Door Handle (Pre-2005)
2	7896R	20-17896M00IR	Outer Door Skin W/ View Window Cut Out, Old Style Door Handle (Pre-2005)
3	6024L	R79-6024M00	Outer Door Skin W/O View Window, New Style Door Handle (2005-2008)
4	6024R	R79-6024M0IR	Outer Door Skin W/ View Window Cut Out, New Style Door Handle (2005-2008)
5	6027L	R79-6027M00	Outer Door Skin W/O View Window (2008-Present)
6	6027R	R79-6027M0I	Outer Door Skin W/ View Window (2008-Present)

**NOTE:** Driver side door skins can be used on the passenger side to remove the view window

## Cab Door Handles

**Before 2005**

**After 2005**

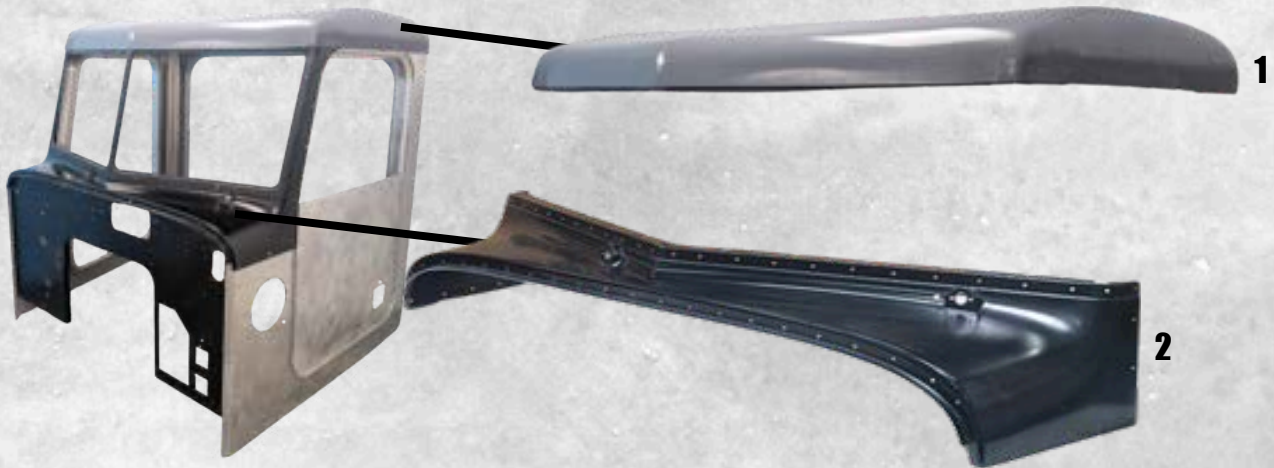


	<b>TS PART NO.</b>	<b>OEM PART NO.</b>	<b>DESCRIPTION</b>
7	8179L	20-8179L	Door Handle, Driver Side (Pre-2005)
8	8179R	20-8179R	Door Handle, Passenger Side (Pre-2005)
9	1025L	R56-1025	Door Handle, Driver Side (2005-Present)
10	1025R	R56-1025R	Door Handle, Passenger Side (2005-Present)

# PETERBILT CAB CORNER SKINS

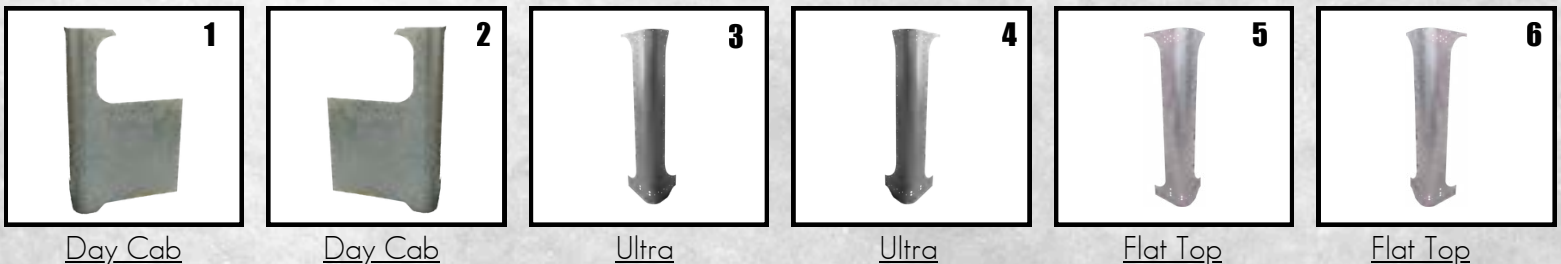
FOR MODELS: 335 - 337 - 348 - 357 - 365 - 367 - 377 - 378 - 379 - 384 - 385 - 386 - 388 - 389

## Peterbilt Roof and Cowl



	TS PART NO.	OEM PART NO.	DESCRIPTION
1	6273	R22-6273	Flat Top Cab Roof Cap (1994-2024) - FIBERGLASS
2	2960	R29-6029	Cab Cowl (1987-2024)

## Peterbilt Cab Corner Skins



Day Cab

Day Cab

Ultra

Ultra

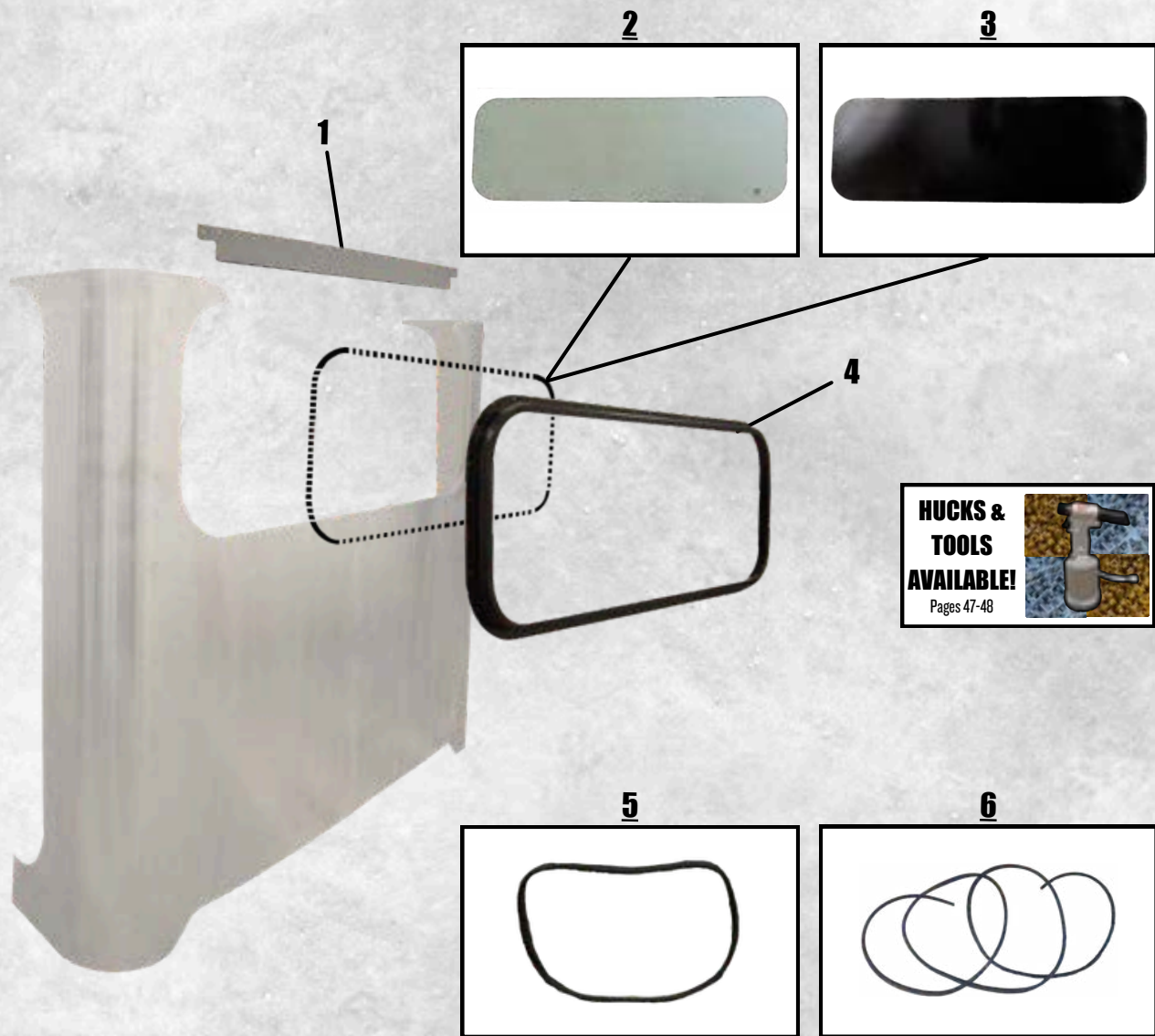
Flat Top

Flat Top

	TS PART NO.	OEM PART NO.	DESCRIPTION
1	6044L	R79-6043-100	Driver Side Day Cab Skin (1998-2024)
2	6044R	R79-6044-100	Passenger Side Day Cab Skin (1998-2024)
3	6043L	R79-6042	Driver Side Ultra Cab Corner Skin (1995-2024)
4	6043R	R79-6042R	Passenger Side Ultra Cab Corner Skin (1995-2024)
5	6042L	R79-6041	Driver Side Flat Top/High Roof Cab Corner Skin (1995-2024)
6	6042R	R79-6041R	Passenger Side Flat Top/High Roof Cab Corner Skin (1995-2024)

# UNIBILT DAY CABS WINDOWS & FRAMES

FOR MODELS: 335 - 337 - 348 - 357 - 365 - 367 - 377 - 378 - 379 - 384 - 385 - 386 - 388 - 389



**HUCKS &  
TOOLS  
AVAILABLE!**  
Pages 47-48

	<b>TS PART NO.</b>	<b>OEM PART NO.</b>	<b>DESCRIPTION</b>
1	6774	20-16774	Spacer Roof Walkthrough (OEM)
2	6026	R44-6026-2	Rear Window Glass - <u>CLEAR</u> (OEM)
3	6027	R44-6027-2	Rear Window Glass - <u>DARK</u> (OEM)
4	6676	20-16676	Day Cab Window Frame (OEM)
5	6781	20-16781	Seal - Rear Window (OEM)
6	3686	20-03686	Seal Filler Strip (13 ft. needed) (OEM)

# UNIBILT SLEEPERS IDENTIFICATION GUIDE

Unibilt sleepers were introduced in 1994 and production continues today. Our aftermarket panels are proudly made in the USA to OEM specifications.

Before ordering panels, it is important to determine which sleeper you have. Please see our guide below or give us a call at 847-520-2950 and we will be happy to assist.

## What Generation is My Unibilt Sleeper?

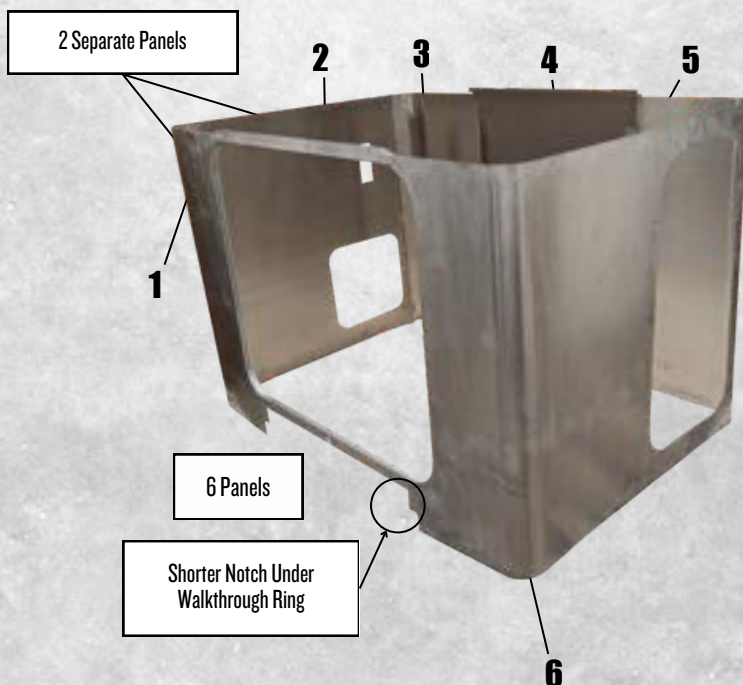
### Identify By Year

<u>Sleeper Year</u>	<u>Generation</u>
Pre-1994	Non-Unibilt
1994-2006	Generation I
2007	Transition year, please see guide below
2008-2024	Generation II

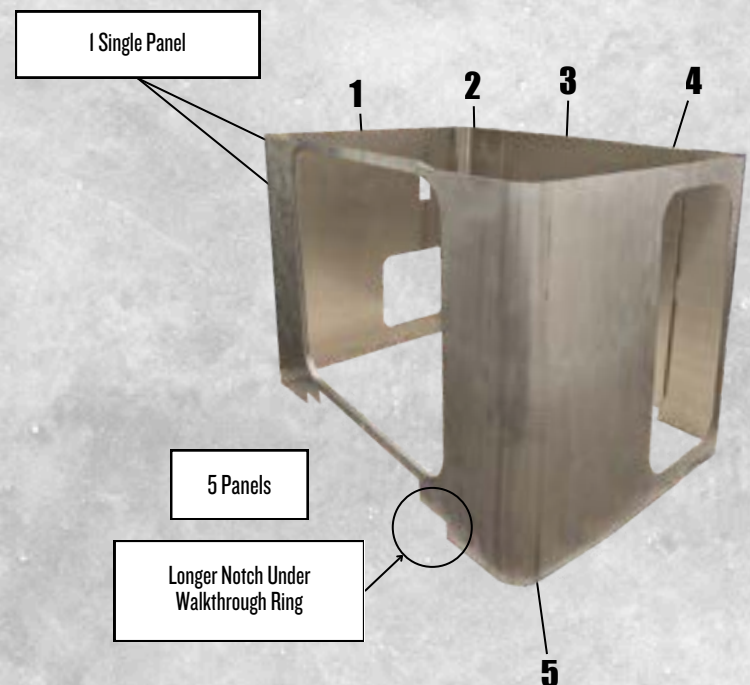
**IMPORTANT: Please note, your sleeper year can be different from your truck year. Please verify sleeper is original before using year alone for ID.**

### Identify By Panels

#### Generation I



#### Generation II



# UNIBILT SLEEPERS IDENTIFICATION GUIDE

## Identify Your Sleeper Size

Truck Shrouds, LLC offers panels for 36", 48", and 63" Unibilt sleepers.

**36"**



**48"**



**63"**

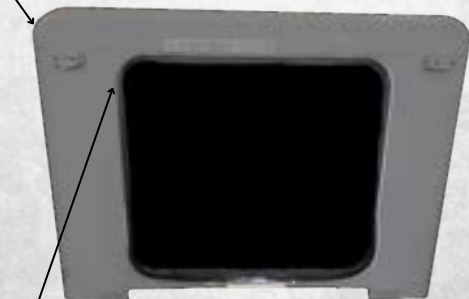


## Identify Your Roof Style

Unibilt sleepers come in three roof styles: Flat Top, High Roof, and Ultra.

**Flat Top**

Flat Roof Cap



Rectangular Walkthrough Ring  
DOES NOT Enter Roof Cap

**High Roof**

Tall Roof Cap



Rectangular Walkthrough Ring  
DOES NOT Enter Roof Panel

**Ultra**

Tall Roof Cap



Rounded Walkthrough Ring  
DOES Enter Roof Cap

### Generation I

36" Flat Top.....	33	48" Flat Top.....	34
48" High Roof.....	35	48" Ultra.....	36
63" Flat Top.....	37	63" High Roof.....	38
63" Ultra.....	39		

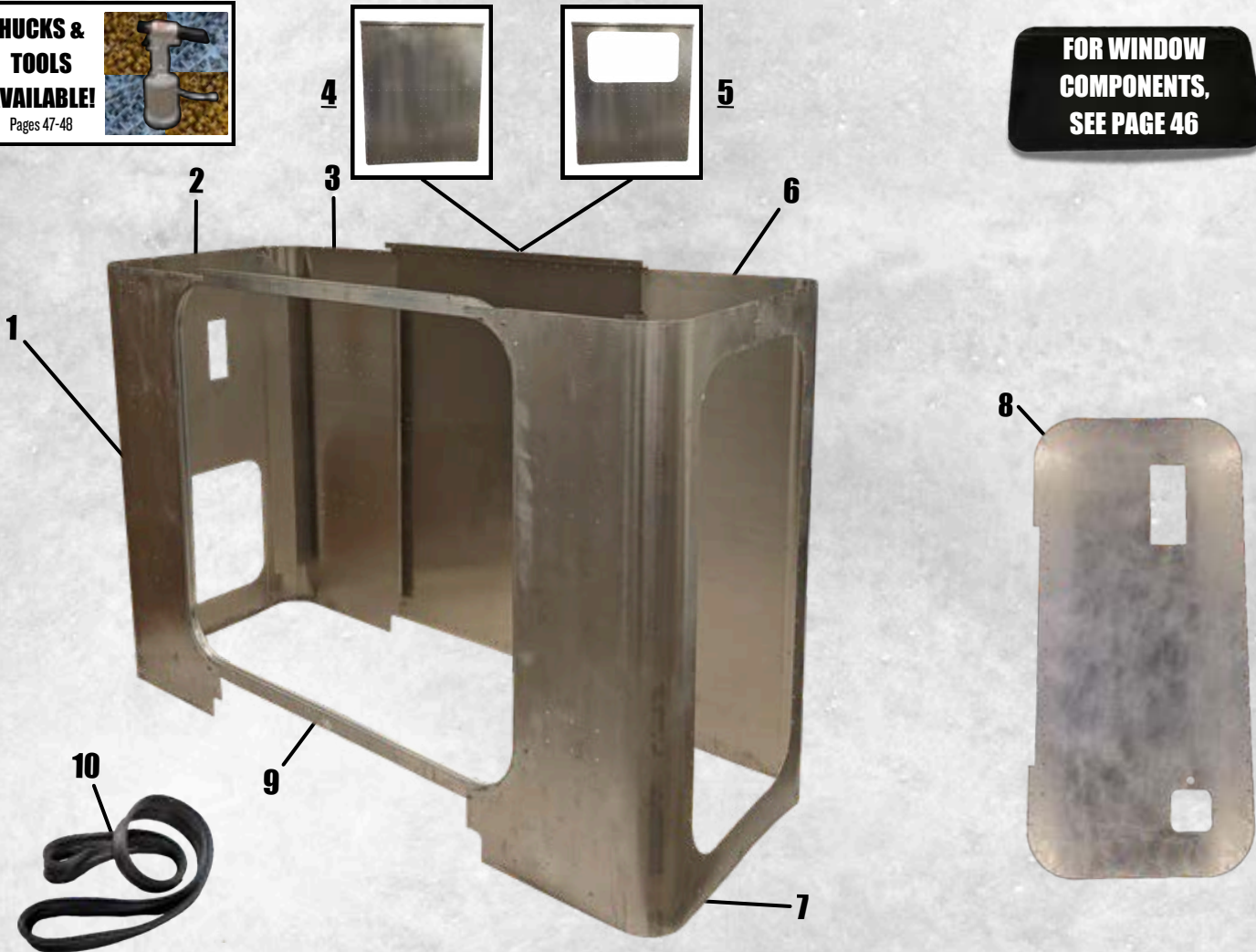
### Generation II

36" Flat Top.....	40
48" Flat Top.....	41
48" Ultra.....	42
63" Flat Top.....	43
63" Ultra.....	44

# UNIBILT GENERATION I (1994-2006) 36" FLAT TOP



**FOR WINDOW COMPONENTS, SEE PAGE 46**

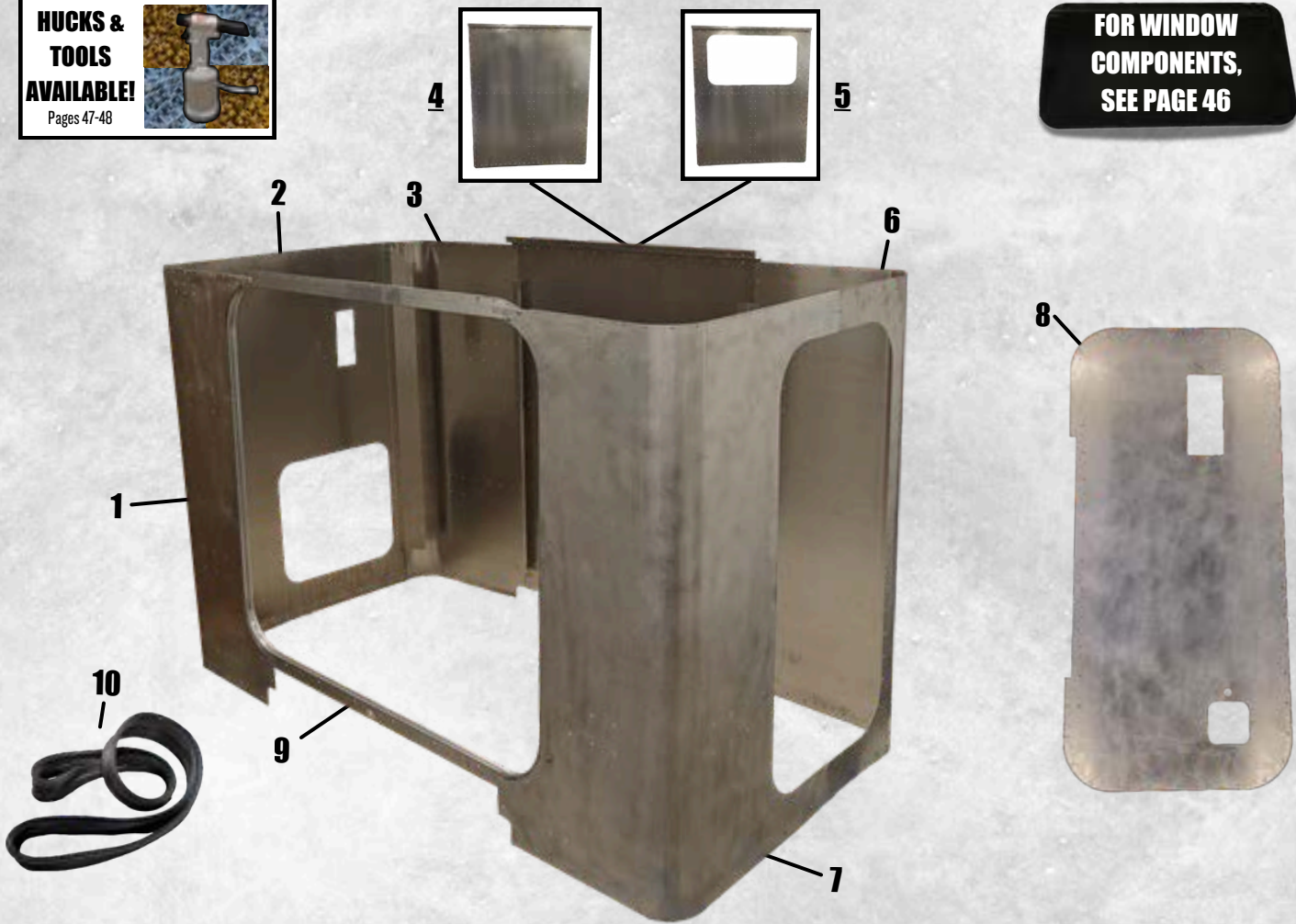


	<b>TS PART NO.</b>	<b>OEM PART NO.</b>	<b>DESCRIPTION</b>
1	2425	29-02425	Front Right Corner Skin
2	2370R	29-02370R	Right Side Skin w/ Bag Door
3	2431	29-02431	Rear Right Corner Skin
4	2535	29-02535	Rear Center <u>WITHOUT</u> Window Cut Out
5	2537	29-02537	Rear Center <u>WITH</u> Window Cut Out
6	2430	29-02430	Rear Left Corner Skin
7	2536	29-02536	Front Left Corner Skin
8	2900	29-00879	Sleeper Door Skin
9	6009	R4I-6009	Aluminum Walkthrough Ring for Unibilt Flat Top Cab or Sleeper (OEM)
10	6002	T09-6002	Rubber Boot for Unibilt Flat Top Cabs and Sleepers (OEM)

# UNIBILT GENERATION I (1994-2006) 48" FLAT TOP



**FOR WINDOW COMPONENTS, SEE PAGE 46**



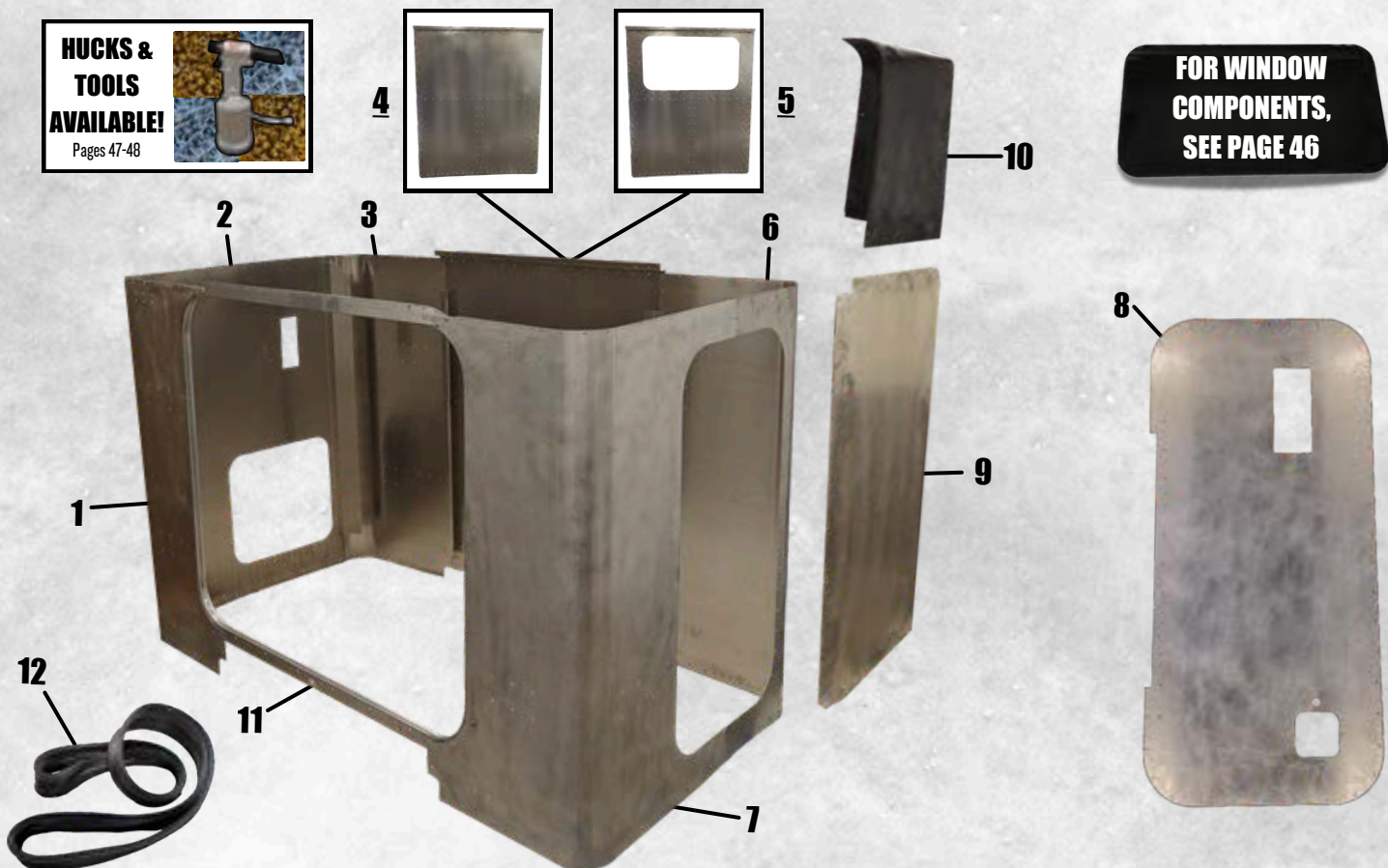
	<b>TS PART NO.</b>	<b>OEM PART NO.</b>	<b>DESCRIPTION</b>
1	2425	29-02425	Front Right Corner Skin
2	2458	29-02458	Right Side Skin w/ Bag Door
3	2431	29-02431	Rear Right Corner Skin
4	2535	29-02535	Rear Center <u>WITHOUT</u> Window Cut Out
5	2537	29-02537	Rear Center <u>WITH</u> Window Cut Out
6	2430	29-02430	Rear Left Corner Skin
7	2429	29-02429	Front Left Corner Skin
8	2900	29-00879	Sleeper Door Skin
9	6009	R41-6009	Aluminum Walkthrough Ring for Unibilt Flat Top Cab or Sleeper (OEM)
10	6002	T09-6002	Rubber Boot for Unibilt Flat Top Cabs and Sleepers (OEM)

# UNIBILT GENERATION I (1994-2006) 48" HIGH ROOF

**HUCKS &  
TOOLS  
AVAILABLE!**  
Pages 47-48

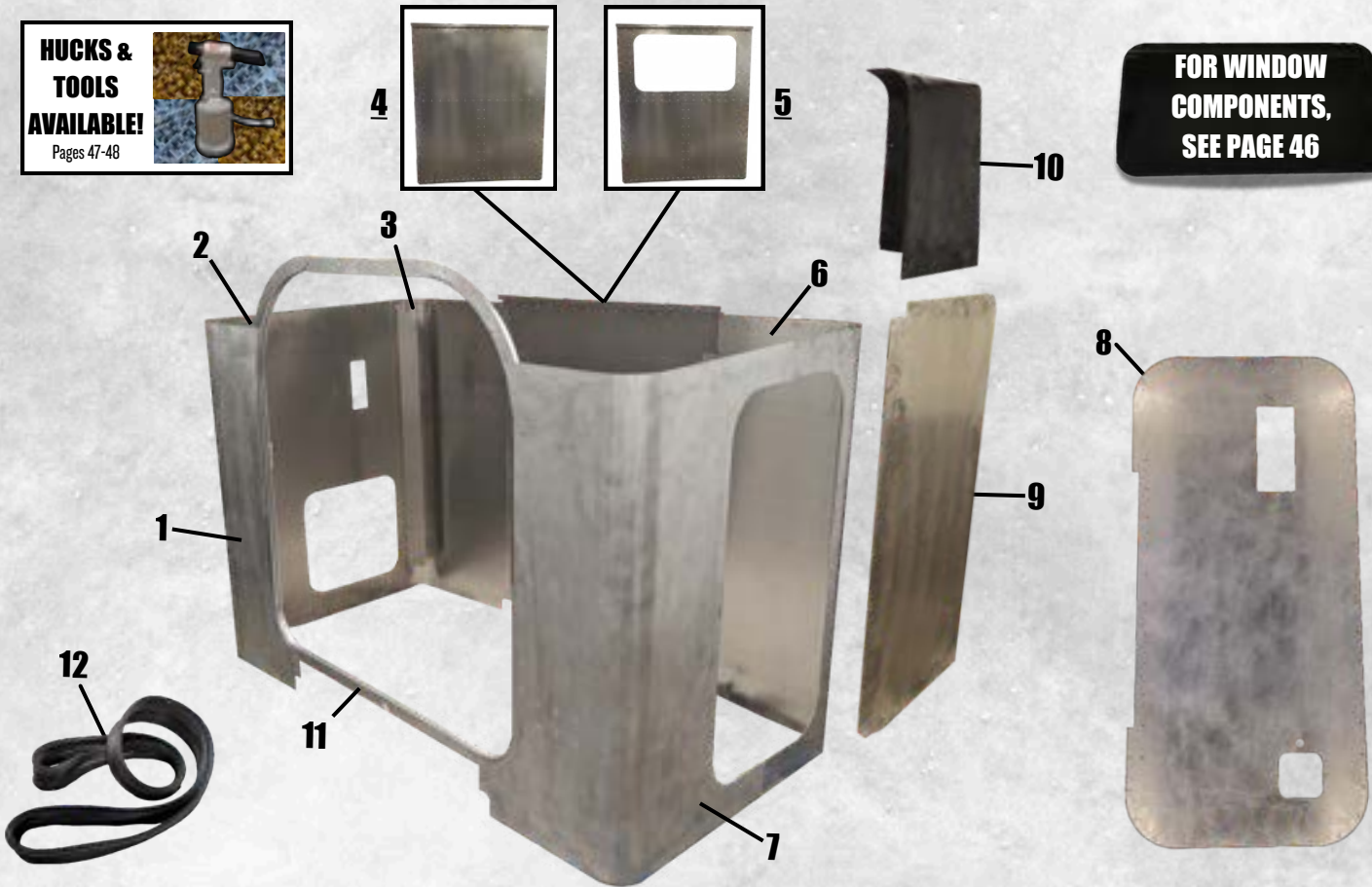


**FOR WINDOW  
COMPONENTS,  
SEE PAGE 46**



	<b>TS PART NO.</b>	<b>OEM PART NO.</b>	<b>DESCRIPTION</b>
1	2425	29-02425	Front Right Corner Skin
2	2422	29-02422	Right Side Skin w/ Bag Door
3	2431	29-02431	Rear Right Corner Skin
4	2535	29-02535	Rear Center <u>WITHOUT</u> Window Cut Out
5	2537	29-02537	Rear Center <u>WITH</u> Window Cut Out
6	2430	29-02430	Rear Left Corner Skin
7	2428	29-02428	Front Left Corner Skin
8	2900	29-00879	Sleeper Door Skin
9	1995L/R	29-01995L/R	Sleeper Extender, Lower
10	4083L/R	29-04083L/R	Sleeper Extender, Upper
11	6009	R41-6009	Aluminum Walkthrough Ring for Unibilt Flat Top Cab or Sleeper (OEM)
12	6002	T09-6002	Rubber Boot for Unibilt Flat Cabs and Sleeper (OEM)

# UNIBILT GENERATION I (1994-2006) 48" ULTRA



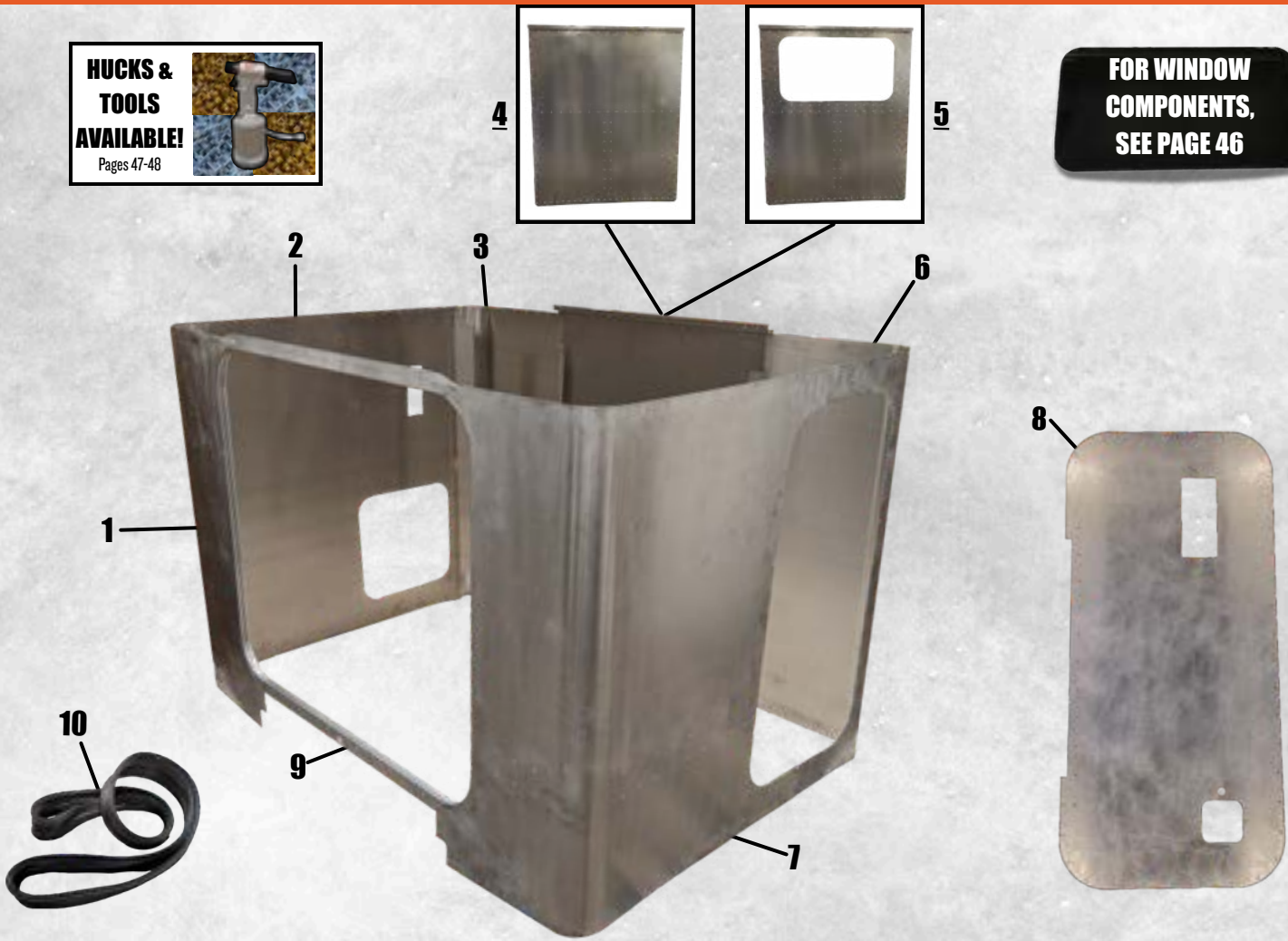
**FOR WINDOW COMPONENTS, SEE PAGE 46**

	TS PART NO.	OEM PART NO.	DESCRIPTION
1	3418R	29-03418R	Front Right Corner Skin
2	2422	29-02422	Right Side Skin w/ Bag Door
3	2431	29-02431	Rear Right Corner Skin
4	2535	29-02535	Rear Center <u>WITHOUT</u> Window Cut Out
5	2537	29-02537	Rear Center <u>WITH</u> Window Cut Out
6	2430	29-02430	Rear Left Corner Skin
7	3302	29-03302	Front Left Corner Skin
8	2900	29-00879	Sleeper Door Skin
9	1995L/R	29-01995L/R	Sleeper Extender, Lower
10	4083L/R	29-04083L/R	Sleeper Extender, Upper
11	6008	R41-6008	Aluminum Walkthrough Ring for Unibilt Ultra Cab or Sleeper (OEM)
12	6001	R09-6001	Rubber Boot for Unibilt Ultra Cabs and Sleeper (OEM)

# UNIBILT GENERATION I (1994-2006) 63" FLAT TOP



**FOR WINDOW  
COMPONENTS,  
SEE PAGE 46**



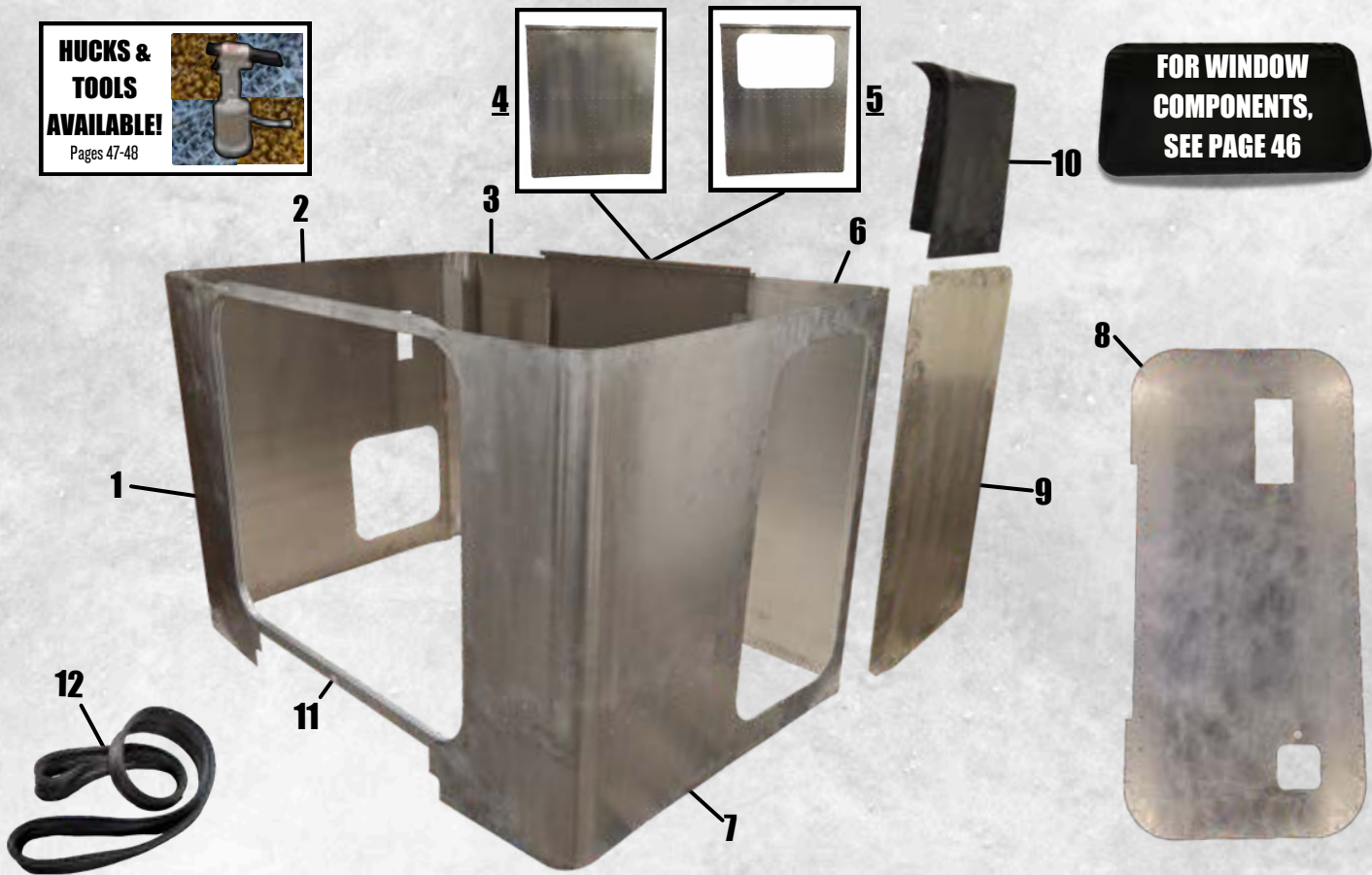
	<b>TS PART NO.</b>	<b>OEM PART NO.</b>	<b>DESCRIPTION</b>
1	2425	29-02425	Front Right Corner Skin
2	2460	29-02460	Right Side Skin w/ Bag Door
3	2431	29-02431	Rear Right Corner Skin
4	2535	29-02535	Rear Center <u>WITHOUT</u> Window Cut Out
5	2537	29-02537	Rear Center <u>WITH</u> Window Cut Out
6	2430	29-02430	Rear Left Corner Skin
7	2427	29-02427	Front Left Corner Skin
8	2900	29-00879	Sleeper Door skin
9	6009	R4I-6009	Aluminum Walkthrough Ring for Unibilt Flat Top Cab or Sleeper (OEM)
10	6002	T09-6002	Rubber Boot for Unibilt Flat Top Cabs and Sleepers (OEM)

# UNIBILT GENERATION I (1994-2006) 63" HIGH ROOF

**HUCKS & TOOLS AVAILABLE!**  
Pages 47-48



**FOR WINDOW COMPONENTS, SEE PAGE 46**

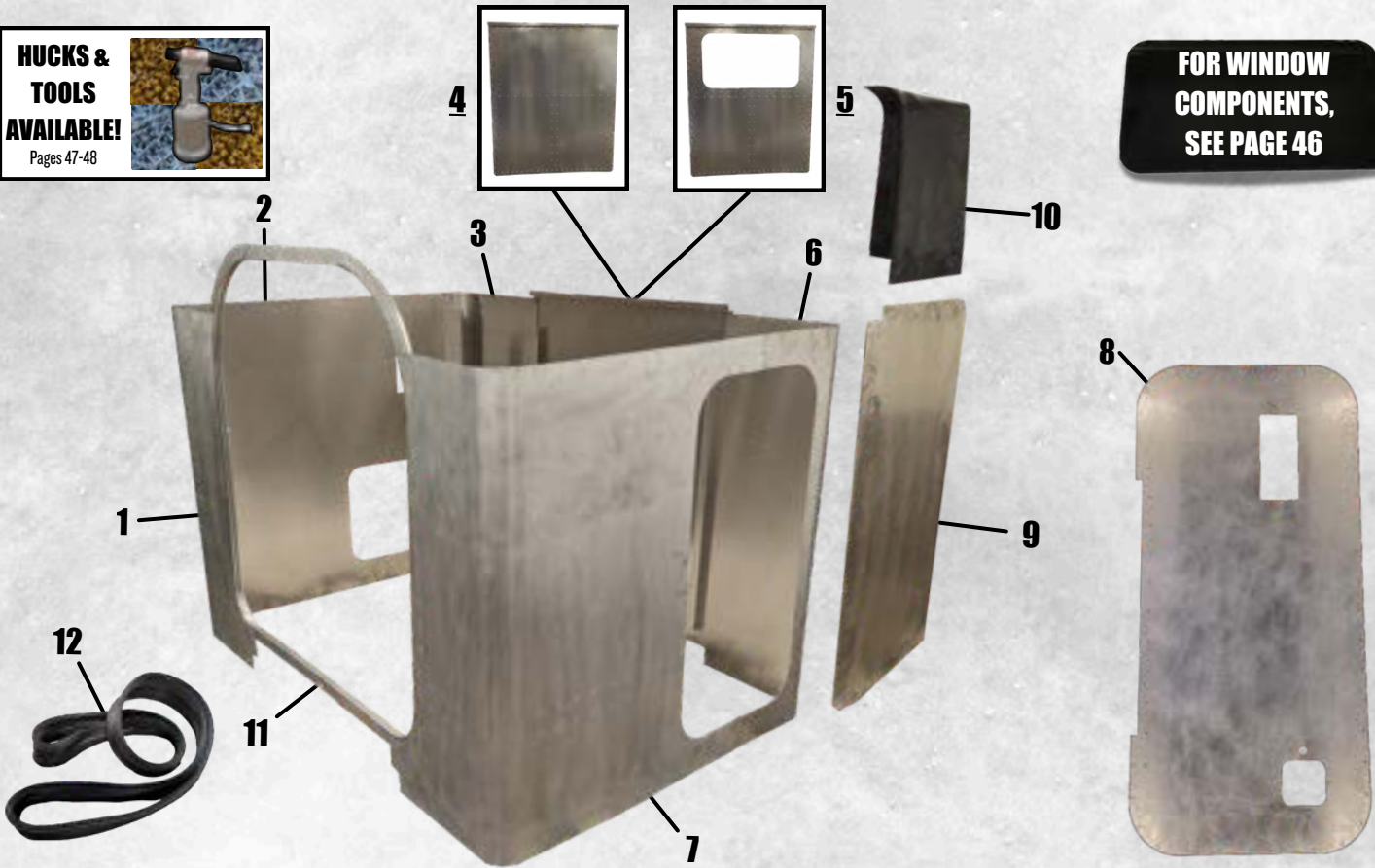


	<b>TS PART NO.</b>	<b>OEM PART NO.</b>	<b>DESCRIPTION</b>
1	2425	29-02425	Front Right Corner Skin
2	2461	29-02461	Right Side Skin w/ Baggage Door
3	2431	29-02431	Rear Right Corner Skin
4	2535	29-02535	Rear Center <u>WITHOUT</u> Window Cut Out
5	2537	29-02537	Rear Center <u>WITH</u> Window Cut Out
6	2430	29-02430	Rear Left Corner Skin
7	2426	29-02426	Front Left Corner Skin
8	2900	29-00879	Sleeper Door Skin
9	1995L/R	29-01995L/R	Sleeper Extender, Lower
10	4083L/R	29-04083L/R	Sleeper Extender, Upper
11	6009	R41-6009	Aluminum Walkthrough Ring for Unibilt Flat Top Cab or Sleeper (OEM)
12	6002	T09-6002	Rubber Boot for Unibilt Flat Top Cabs and Sleepers (OEM)

# UNIBILT GENERATION I (1994-2006) 63" ULTRA



**FOR WINDOW  
COMPONENTS,  
SEE PAGE 46**



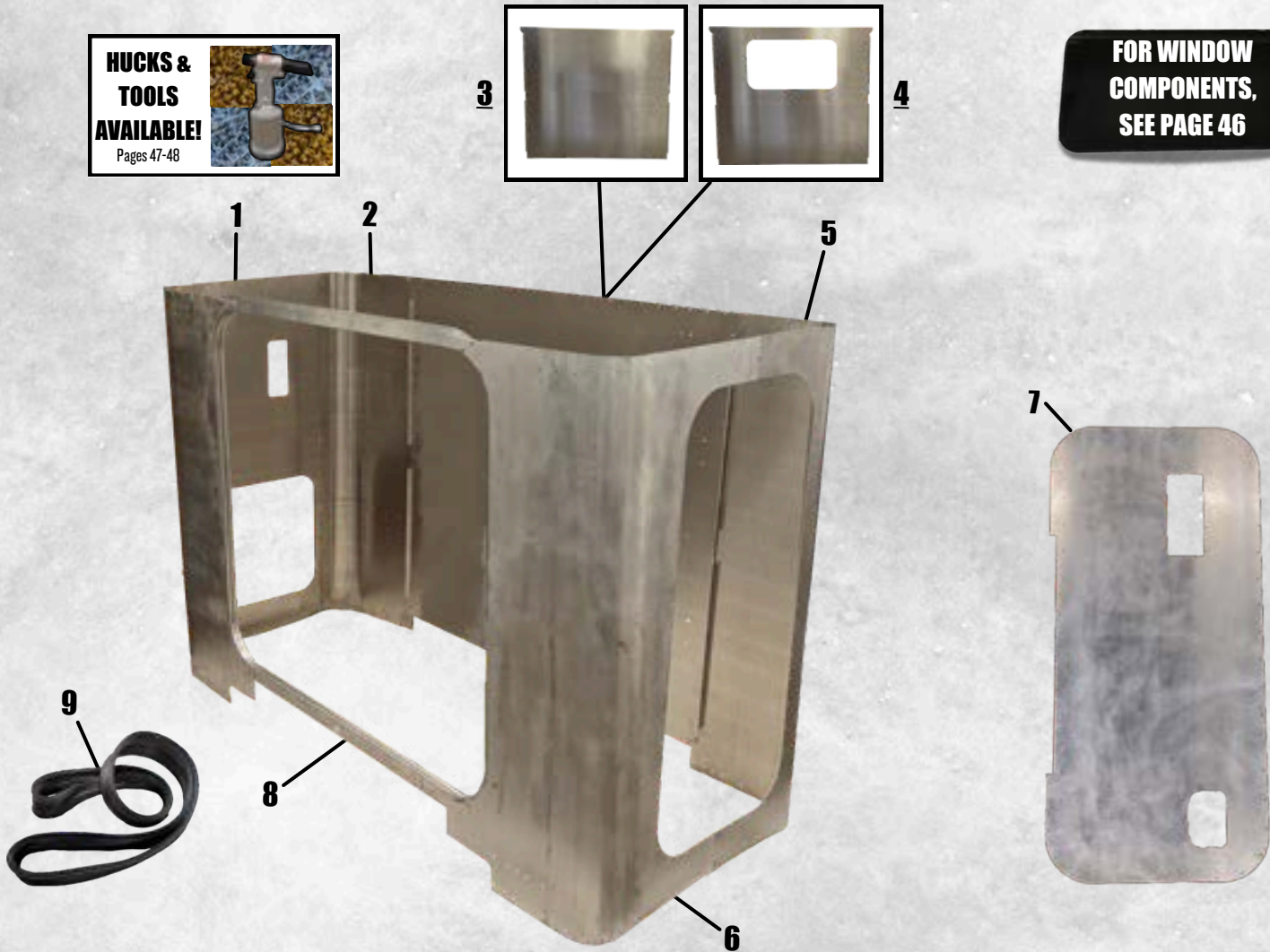
	TS PART NO.	OEM PART NO.	DESCRIPTION
1	3418R	29-03418R	Front Right Corner Skin
2	2461	29-02461	Right Side Skin w/ Bag Door
3	2431	29-02431	Rear Right Corner Skin
4	2535	29-02535	Rear Center <u>WITHOUT</u> Window Cut Out
5	2537	29-2537	Rear Center <u>WITH</u> Window Cut Out
6	2430	29-02430	Rear Left Corner Skin
7	3304	29-03304	Front Left Corner Skin
8	2900	29-00879	Sleeper Door Skin
9	1995L/R	29-01995L/R	Sleeper Extender, Lower
10	4083L/R	29-04083L/R	Sleeper Extender, Upper
11	6008	R4I-6008	Aluminum Walkthrough Ring for Unibilt Ultra Cab or Sleeper (OEM)
12	6001	R09-6001	Rubber Boot for Unibilt Ultra Cab and Sleeper (OEM)

# UNIBILT GENERATION II (2008-2024) 36" FLAT TOP

**HUCKS &  
TOOLS  
AVAILABLE!**  
Pages 47-48



**FOR WINDOW  
COMPONENTS,  
SEE PAGE 46**



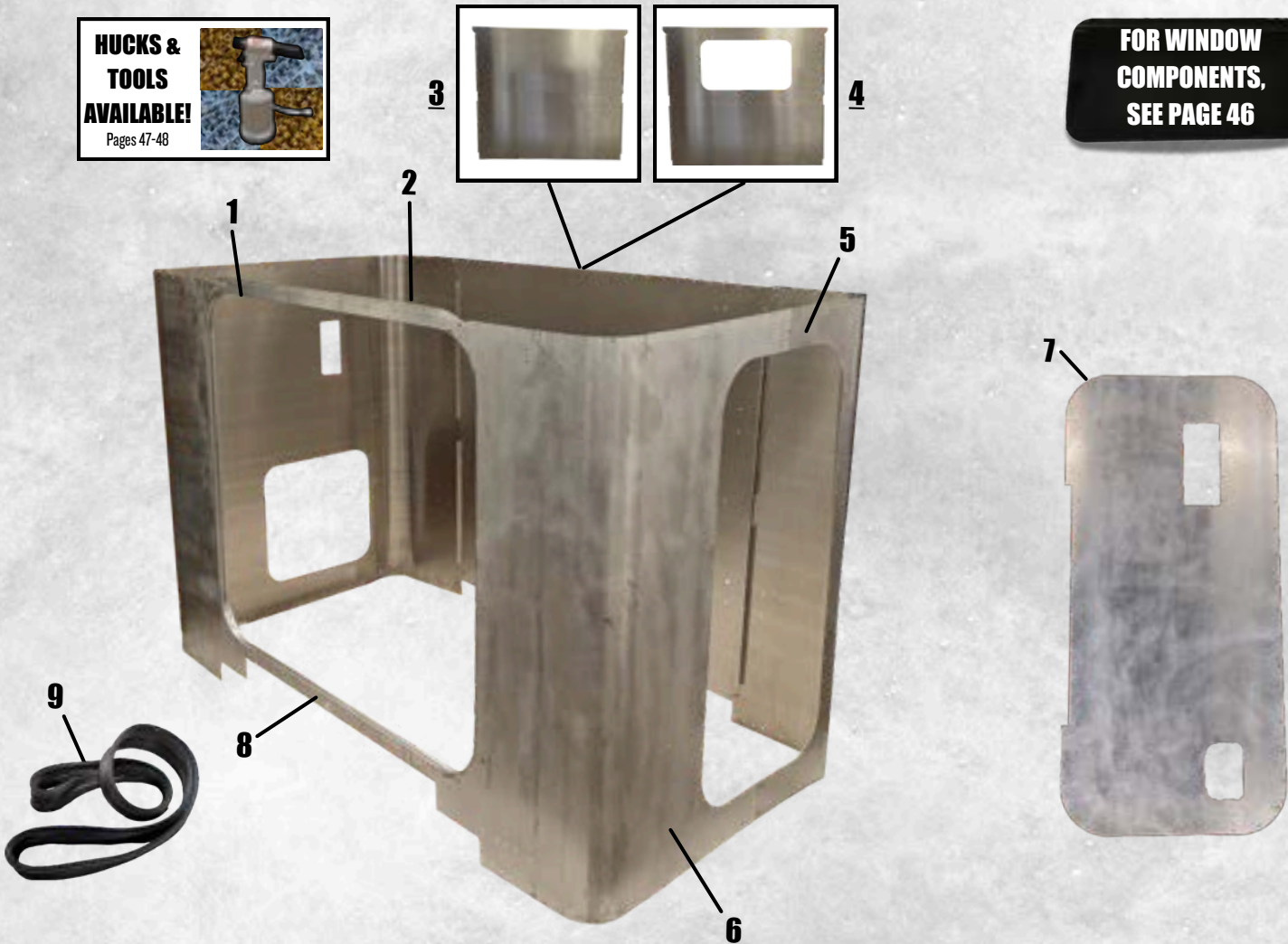
	<b>TS PART NO.</b>	<b>OEM PART NO.</b>	<b>DESCRIPTION</b>
1	6053	T79-6053-200	Front Right Corner Skin
2	6033	T79-6033	Rear Right Corner Skin
3	6024NW	T79-6024-0001	Rear Center <u>WITHOUT</u> Window Cut Out
4	6024W	T79-6024-0002	Rear Center <u>WITH</u> Window Cut Out
5	6031	T79-6031	Rear Left Corner Skin
6	6052	T79-6052	Front Left Corner Skin
7	7960	T79-6028	Sleeper Door Skin
8	6009	R41-6009	Aluminum Walkthrough Ring for Unibilt Flat Top Cab or Sleeper (OEM)
9	6002	T09-6002	Rubber Boot for Unibilt Flat Top Cabs and Sleepers (OEM)

# UNIBILT GENERATION II (2008-2024) 48" FLAT TOP

**HUCKS & TOOLS AVAILABLE!**  
Pages 47-48



**FOR WINDOW COMPONENTS, SEE PAGE 46**



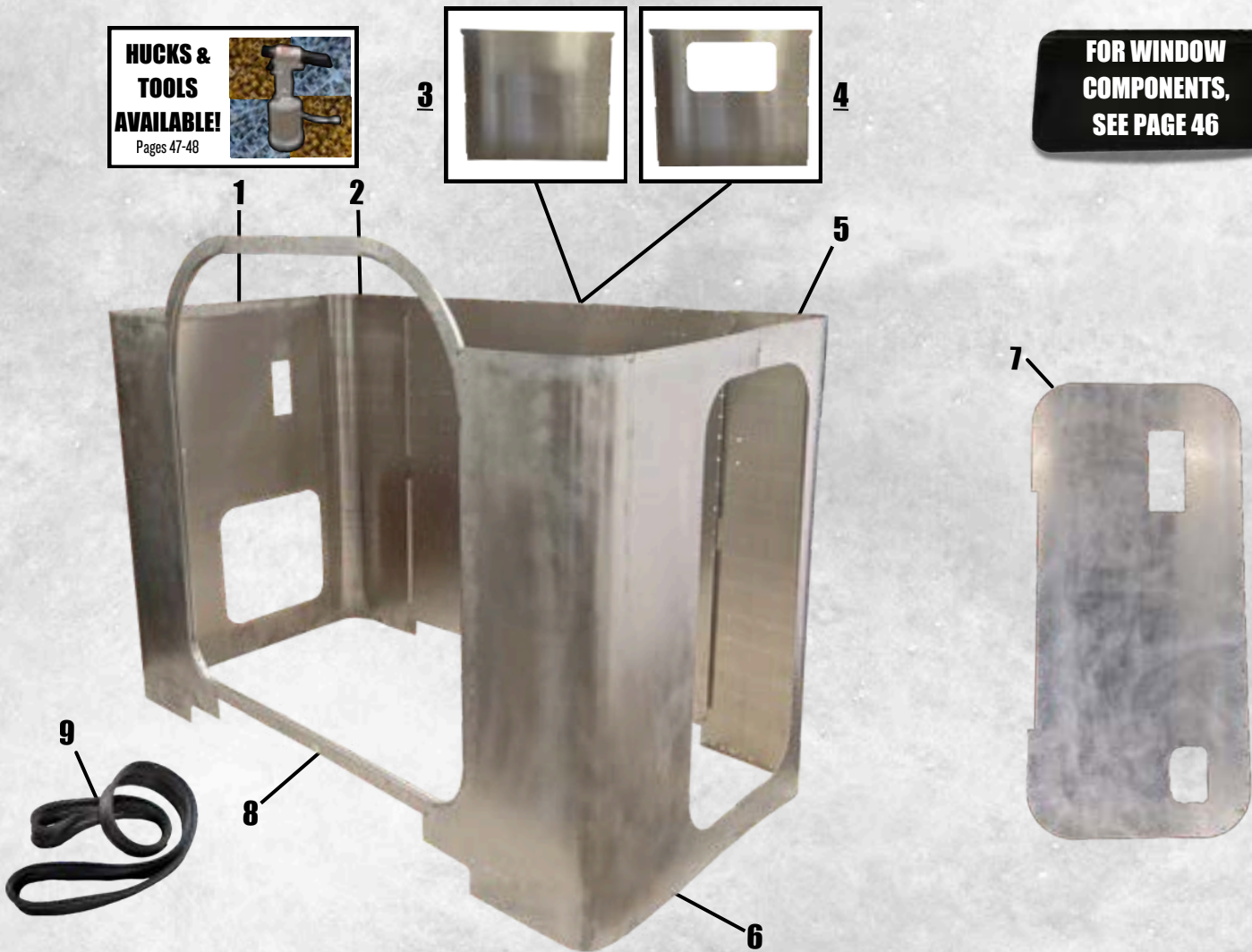
	<b>TS PART NO.</b>	<b>OEM PART NO.</b>	<b>DESCRIPTION</b>
1	6051	T79-6051-200	Front Right Corner Skin
2	6033	T79-6033	Rear Right Corner Skin
3	6024NW	T79-6024-0001	Rear Center <u>WITHOUT</u> Window Cut Out
4	6024W	T79-6024-6002	Rear Center <u>WITH</u> Window Cut Out
5	6031	T79-6031	Rear Left Corner Skin
6	6050	T79-6050	Front Left Corner Skin
7	7960	T79-6028	Sleeper Door Skin
8	6009	R41-6009	Aluminum Walkthrough Ring for Unibilt Flat Top Cab or Sleeper (OEM)
9	6002	T09-6002	Rubber Boot for Unibilt Flat Top Cabs and Sleepers (OEM)

# UNIBILT GENERATION II (2008-2024) 48" ULTRA

**HUCKS &  
TOOLS  
AVAILABLE!**  
Pages 47-48



**FOR WINDOW  
COMPONENTS,  
SEE PAGE 46**



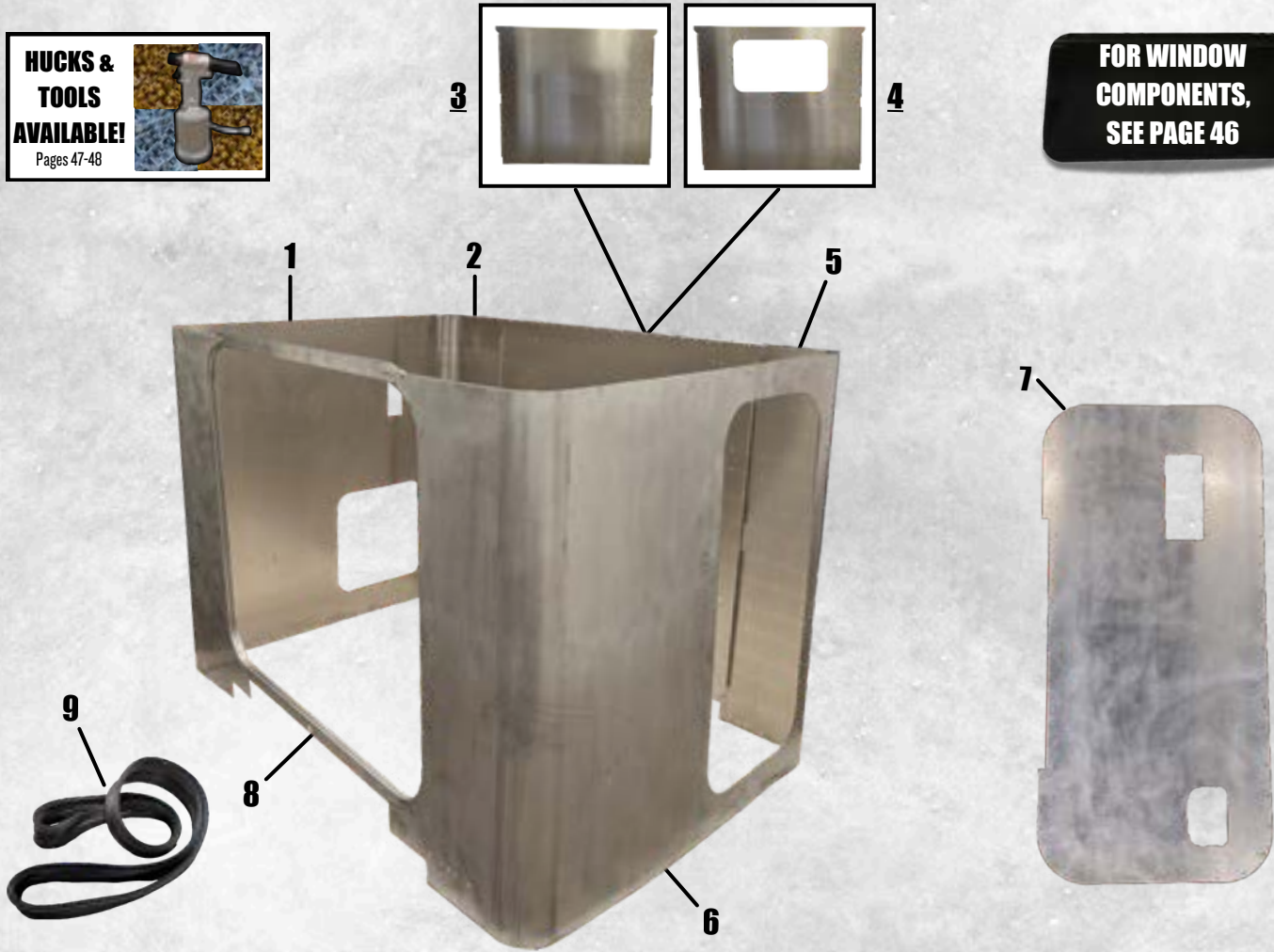
	<b>TS PART NO.</b>	<b>OEM PART NO.</b>	<b>DESCRIPTION</b>
1	6049	T79-6049-200	Front Right Corner Skin
2	6033	T79-6033	Rear Right Corner Skin
3	6024NW	T79-6024-0001	Rear Center <u>WITHOUT</u> Window Cut Out
4	6024W	T79-6024-0002	Rear Center <u>WITH</u> Window Cut Out
5	6031	T79-6031	Rear Left Corner Skin
6	6048	T79-6048	Front Left Corner Skin
7	7960	T79-6028	Sleeper Door Skin
8	6008	R41-6008	Aluminum Walkthrough Ring for Unibilt Ultra Cab or Sleeper (OEM)
9	6001	R09-6001	Rubber Boot for Unibilt Ultra Cabs and Sleeper (OEM)

# UNIBILT GENERATION II (2008-2024) 63" FLAT TOP

**HUCKS &  
TOOLS  
AVAILABLE!**  
Pages 47-48



**FOR WINDOW  
COMPONENTS,  
SEE PAGE 46**

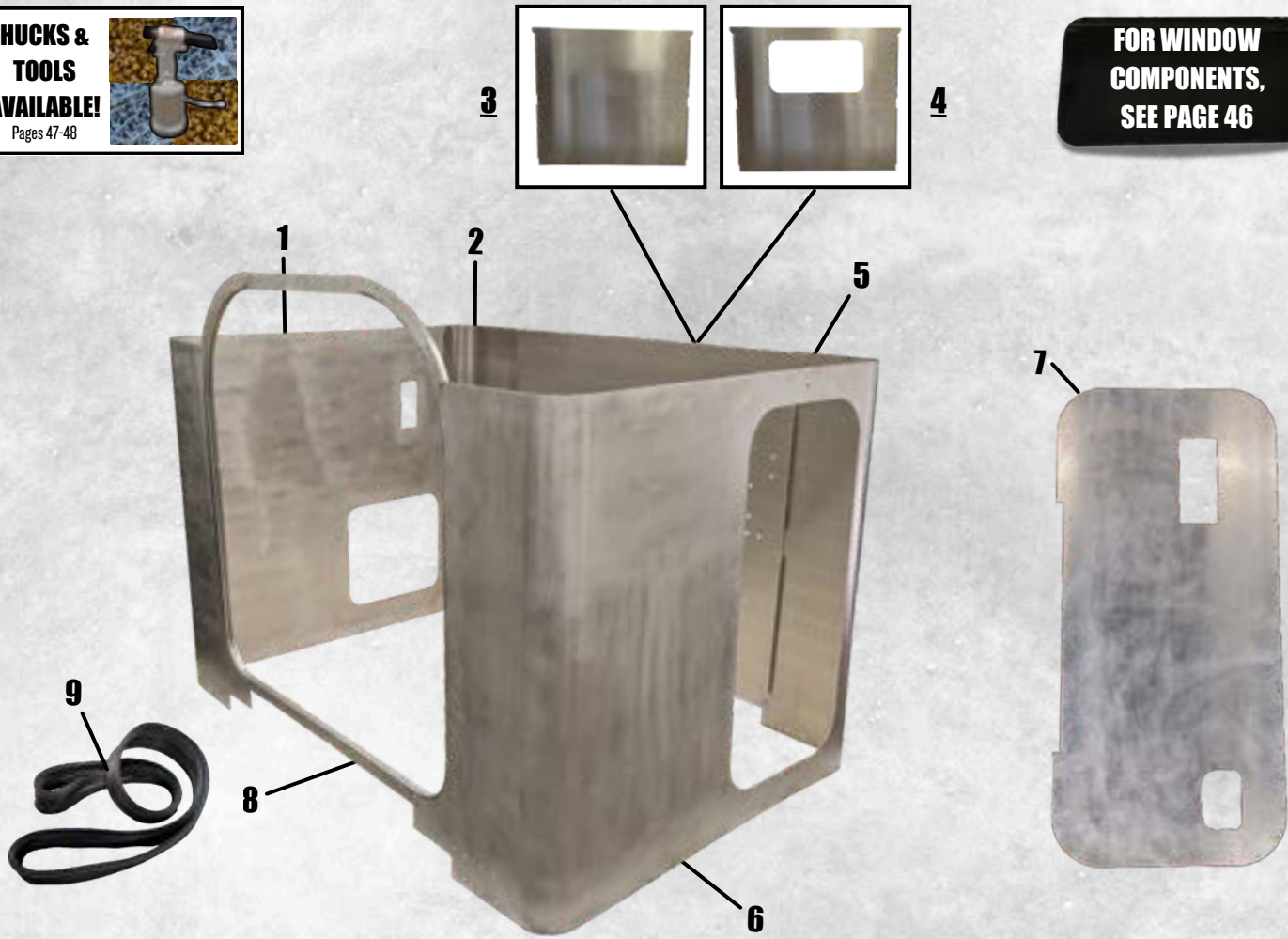


	<b>TS PART NO.</b>	<b>OEM PART NO.</b>	<b>DESCRIPTION</b>
1	6035	T79-6035-200	Front Right Corner Skin
2	6033	T79-6033	Rear Right Corner Skin
3	6024NW	T79-6024-0001	Rear Center <u>WITHOUT</u> Window Cut Out
4	6024W	T79-6024-0002	Rear Center <u>WITH</u> Window Cut Out
5	6031	T79-6031	Rear Left Corner Skin
6	6034	T79-6034	Front Left Corner Skin
7	7960	T79-6028	Sleeper Door Skin
8	6009	R41-6009	Aluminum Walkthrough Ring for Unibilt Flat Top Cab or Sleeper (OEM)
9	6002	T09-6002	Rubber Boot for Unibilt Flat Top Cabs and Sleepers (OEM)

# UNIBILT GENERATION II (2008-2024) 63" ULTRA



**FOR WINDOW  
COMPONENTS,  
SEE PAGE 46**



	<b>TS PART NO.</b>	<b>OEM PART NO.</b>	<b>DESCRIPTION</b>
1	6032	T79-6032-200	Front Right Corner Skin
3	6033	T79-6033	Rear Right Corner Skin
3	6024NW	T79-6024-0001	Rear Center <u>WITHOUT</u> Window Cut Out
4	6024W	T79-6024-0002	Rear Center <u>WITH</u> Window Cut Out
5	6031	T79-6031	Rear Left Corner Skin
6	6030	T79-6030	Front Left Corner Skin
7	7960	T79-6028	Sleeper Door Skin
8	6008	R4I-6008	Aluminum Walkthrough Ring for Unibilt Ultra Cab or Sleeper (OEM)
9	6001	R09-6001	Rubber Boot for Unibilt Ultra Cabs and Sleeper (OEM)

# UNIBILT SLEEPERS SLEEPER COMPONENTS

## Sleeper Door Components



	TS PART NO.	OEM PART NO.	DESCRIPTION
1	8179L	20-8179L	Sleeper Door Handle, Left (1987-2005)
2	1025L	R56-1025	Sleeper Door Handle, Left (2007-Present)
3	3610R	29-03610R	Compartment Door Handle, Right (1987-2005)
4	4182	29-04182	Baggage Door Frame (OEM) (1994-2006)
5	6025R	T25-6025R	Baggage Door Frame (OEM) (2007-Present)



## WHAT IS A BIG HOLE CONVERSION?



A BIG HOLE CONVERSION IS MAKING YOUR EXISTING SMALL HOLE FROM A PRE-UNIBILT SLEEPER INTO A BIG HOLE FOR THE PURPOSE OF ADDITIONAL LEG ROOM AND COMFORT.

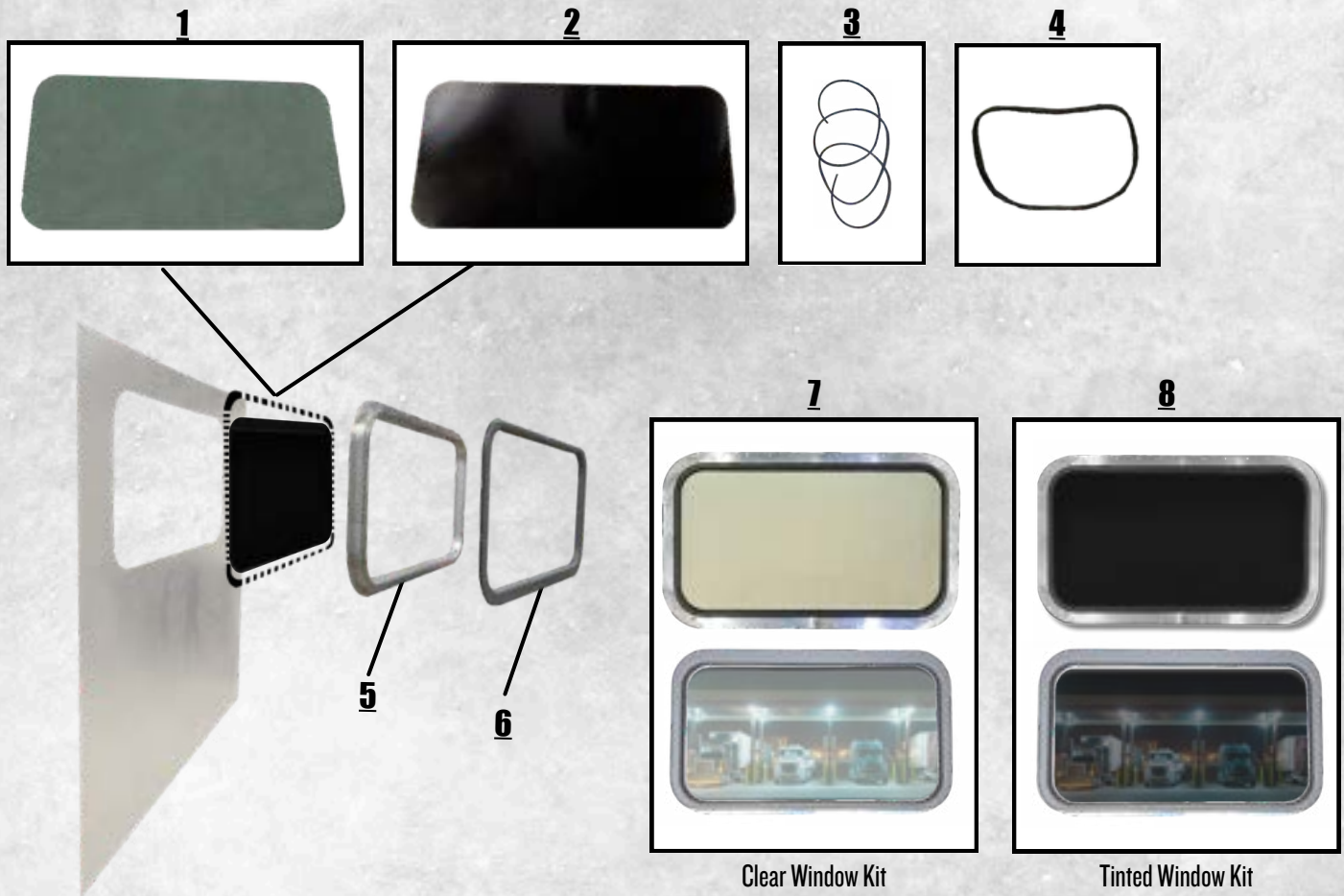
ALL THAT IS NEEDED TO DO THE CONVERSION IS TWO RINGS, A BOOT, AND A LITTLE KNOW HOW.



TS PART NO.	OEM PART NO.	QUANTITY NEEDED	DESCRIPTION
6009	R41-6009	2	Aluminum Walkthrough Ring for Unibilt Flat Top and High Roof Cabs and Sleepers
6002	T09-6002	1	Rubber Boot for Unibilt Flat Top Cabs and Sleepers
H6009	n/a	1	Huck / Rivet Kit for Install

**HUCK TOOL RENTALS ALSO AVAILABLE FOR THE JOB**

# UNIBILT SLEEPERS WINDOWS & FRAMES



	<b>TS PART NO.</b>	<b>OEM PART NO.</b>	<b>DESCRIPTION</b>
1	6028	R44-6028-5	Rear Bunk Window - <u>CLEAR</u>
2	6029	R44-6029-5	Rear Bunk Window - <u>DARK</u>
3	3686	20-03686	Seal Filler Strip - 10 ft.
4	8497	20-18497	Seal for Bunk Window (OEM)
5	6005	T4I-6005	Aluminum Frame for Bunk Window (OEM)
6	5886	20-15886-251	Interior Window Trim (OEM)
7	6028K	N/A	Complete Window Kit - <u>CLEAR WINDOW</u> (Includes #1,3-6)
8	6029K	N/A	Complete Window Kit - <u>DARK WINDOW</u> (Includes #2-6)

# AIR RIVETERS & NOSES

## Huck Air Riveter



Huck

	TS PART NO.	OEM PART NO.	DESCRIPTION
1	1456	99-1456	3/16 Magna-Grip Nose
2	1458	99-1458	1/4 Magna-Grip Nose
3	3003	99-3003	3/16 C6L (Stainless) Nose
4	3487	99-3487	3/16 & 1/4 Magnalok Nose
5	1457	99-1457	3/16 Magna-Grip Nose Long
6	1459	99-1459	1/4 Magna-Grip Nose Long
7	2025	2025	2025 HUCK Tool
8	1100	N/A	100 PSI Limiter
9	2026	N/A	Huck Cab Kit (Includes: 1-4, 7, 8)

- Industry Standard
- Long Life and Easy to Service
- Quick and efficient
- For Heavy and Extended Use

## Marson Air Riveter



Marson

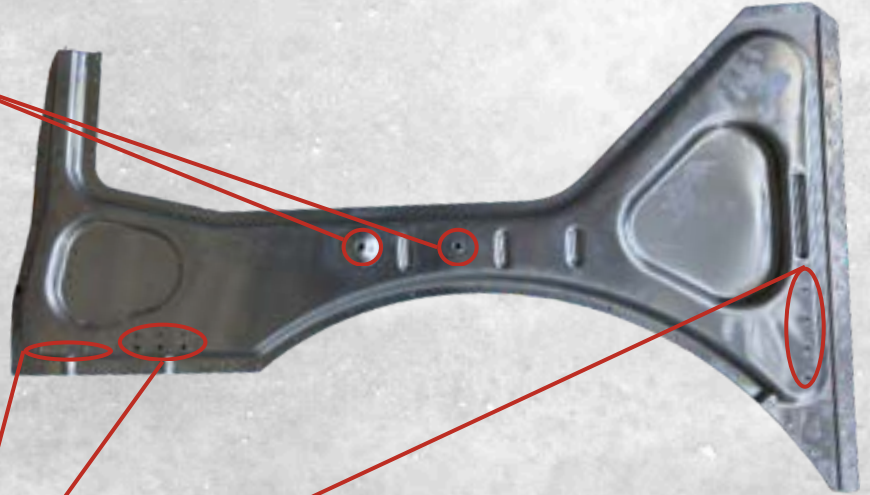
	TS PART NO.	OEM PART NO.	DESCRIPTION
1	1456	99-1456	3/16 Magna-Grip Nose
2	1458	99-1458	1/4 Magna-Grip Nose
3	3003	99-3003	3/16 C6L (Stainless) Nose
4	6557	M96557	3/16 & 1/4 Blind Nose
5	1457	99-1457	3/16 Magna-Grip Nose Long
6	1459	99-1459	1/4 Magna-Grip Nose Long
7	9510	M39510 AH-250	Marson Air Riveter
8	1100	N/A	100 PSI Limiter
9	9520	N/A	Marson Cab Kit (Includes: 1-4, 7, 8)

- Good for the Occasional User
- More Affordable
- Slightly Slower than the 2025
- Quality Made Tool

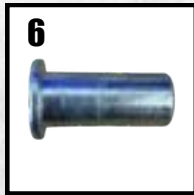
Rentals Available for Either Huck or Marson Air Riveters  
Contact Us for More Details

# Hand Tools & Hardware

## 1/2"-20 Rivnut Tool



## 1/4"-20 Rivnut Tool



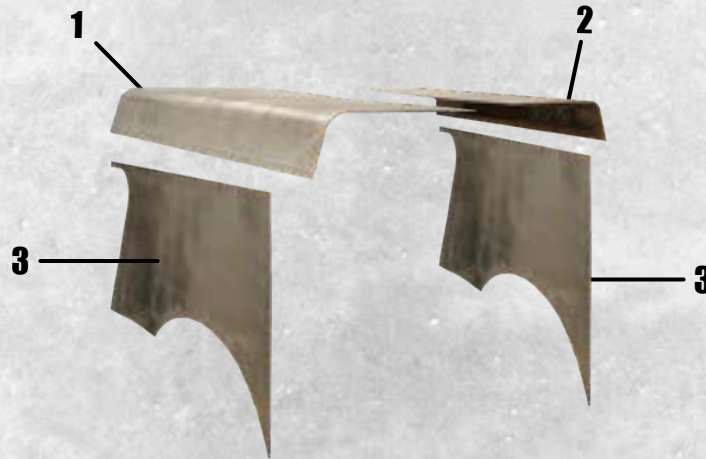
	TS PART NO.	OEM PART NO.	DESCRIPTION
1	5020	C722-5020	1/2"-20 Rivnut Hand Tool
2	H7260	HWC07260	1/2"-20 Rivnut
3	H4820	AHS4-820-200	1/2"-20 Hexnut
4	2520	C722-2520	1/4"-20 Rivnut Hand Tool
5	H25140	n/a	1/4"-20 Rivnut (.080-.140 Grip)
6	H25200	n/a	1/4"-20 Rivnut (.140-.200 Grip)

Rentals Available on the Tools. Pre-Installed Rivnuts Also Available on Select Parts



Need Hucks or Hardware for Your Job? We got you covered! We can even calculate what you need for your specific job. Contact us with what parts you are replacing or add to your cart when checking out online.

# PETERBILT 359 HOOD PANELS



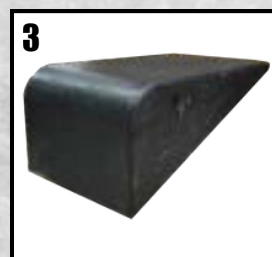
	TS PART NO.	OEM PART NO.	DESCRIPTION
1	3467L	I3-03467L	Top Skin, Passenger Side
2	3467R	I3-03467R	Top Skin, Driver Side
3	3463	I3-03463	Side Skin

## BATTERY BOX COVERS

### Battery Boxes for Kenworth



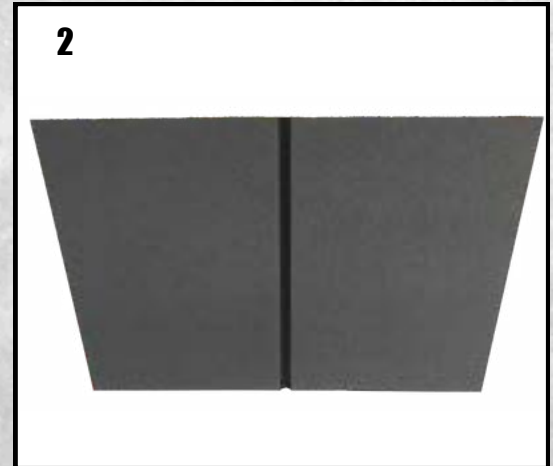
### Battery Boxes for Peterbilt



	TS PART NO.	OEM PART NO.	DESCRIPTION
1	846	K097-846	Kenworth Space Saver Battery Box Cover T800
2	2464	K097-2464	Kenworth Battery Box Cover T600
3	6020	N22-6020-220 N22-6020-210	Peterbilt Space Saver Battery Box Lid - <u>FIBERGLASS</u>
4	6020M	N22-6020-220 N22-6020-210	Peterbilt Space Saver Battery Box Lid - <u>METAL</u>

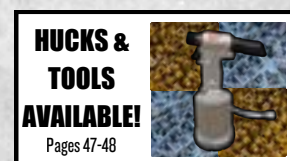
# KENWORTH BODY & HOOD PARTS

## W900L Insulation



	TS PART NO.	OEM PART NO.	DESCRIPTION
1	1008	L72-1008	Hood Insulation for W900L (2003-2007)
2	1031	L72-1031-100	Hood Insulation for W900L (2008-Current)

## Aerocab Sleeper Skins



	TS PART NO.	OEM PART NO.	DESCRIPTION
2	1062	T64-1062-100	Aerocab Rear Sleeper Corner



**Truck  
Shrouds, LLC**

**1584 Barclay Blvd.  
Buffalo Grove, IL 60089  
847-520-2950**

## Aluminum Panels for Peterbilt 379s & 389s



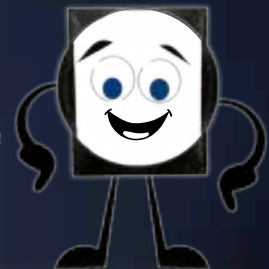
- Hood Panels, Cab Panels, Sleeper Panels
- Hood Inner Bracketing & Rivets Available
- Save Up to 60% vs. OEM Prices
- Guaranteed Fit on All Panels
- OEM Quality and Standards
- Pre-Drilled Panels, Ready to Install
- Made Out of Aluminum, Same as OEM

## Fan Shrouds for Peterbilt & Kenworth



- Save Up to 60% vs. OEM Prices
- Guaranteed Fit
- OEM Quality & Standards
- Made Out of Fiberglass
- Gel- Coated for Improved Air Flow

- Pre-Drilled Bolt Holes
- Ships Same Day
- Overnight & Expedited Options Available
- MADE IN THE USA



## SIGN UP FOR OUR ONLINE PORTAL

- Check Price and Availability
- Create and Save Estimates
- New Product Updates
- Order Online 24/7
- Get Shipping Quotes
- More Features to Come



## PLUS Get Access to Truck Shrouds Bargain Bin!

Go online to view and purchase our rotating inventory of damaged or imperfect parts sold at deep discounts

